

A man with a beard, wearing a dark coat and a scarf, stands in a snowy forest at night. He is holding a flaming torch in his right hand. The background is a dark, snowy landscape with evergreen trees.

WILLIAM SHAKESPEARE'S
THE
WINTER'S TALE

DIRECTED BY
ELIZABETH SWAIN

FEB 4 - MAR 11, 2024

ANTAEUS
Theatre Company

Antaeus Leadership Note



Photo by Frank Ishman

On behalf of all of us at Antaeus Theatre Company, we're thrilled to welcome you to the Kiki & David Gindler Performing Arts Center and to our production of William Shakespeare's *The Winter's Tale*.

No other writer embodies Antaeus' mission of presenting timely and timeless works like Shakespeare does. This production is part of a long line of his masterpieces which the Company has had the joy of exploring and bringing to our audiences - *King Lear* (2010); *Macbeth* (2012); *Henry IV, Part One* (2015); *As You Like It* (2017); *Measure for Measure* (2020); *Hamlet* (2022); and *The Tempest* (2023). These are the towering works of the classical canon.

What is it about Shakespeare that continues to capture our hearts and imaginations? Well, there is the soaring poetry, the exciting plots, and the vivid characters. There is love, romance, humor, violence, death – in short, plenty of drama. But perhaps most important of all, there is an immense, undeniable humanity. Shakespeare is able to explore every aspect of the human condition with intelligence and compassion. The more you know his work, the more you realize the extent of his genius.

At Antaeus, we are extremely lucky to have a roster of artists with years of Shakespearean experience eager to share that wealth of knowledge with our ensemble members, with our students, and with our audiences. At the top of that list is the director of *The Winter's Tale*, Elizabeth Swain.

Should you ever find yourself lucky enough to enjoy a hot cup of tea in Liz's beautiful garden, you will be regaled by her vast knowledge of everything Shakespearean – stories of competing folios, interpretations of characters both major and minor, and detailed notes on a play's text, for that is where she always begins her work. With the words.

We hope you will be as inspired as we are by Liz's passion for Shakespeare. We could not have a better guide as we venture into this epic tale of romance and redemption.

Best,

Bill Brochtrup
Artistic Director

Ana Rose O'Halloran
Producing Executive Director

Antaeus Theatre Company Presents

The Winter's Tale

By William Shakespeare
Directed by Elizabeth Swain

Scenic Designer
Frederica Nascimento**
Lighting Designer
Vickie J. Scott**
Choreographer
Annie Yee
Production Stage Manager
Karen Osborne
Assistant Director/
Production Dramaturg
Kaite Brandt
Dance Captain
Catia Ojeda

Costume Designer
Carolyn Mazuca
Sound Designer
Jeff Gardner**
Props Designer
Aaron Lyons
Composer
Donna Cribari
Assistant Stage Manager
Casey Collaso
Fight Captain
Ned Mochel

Ensemble

Shannon Lee Clair*, JD Cullum*, Paul Eiding*, Kaci Hamilton*,
Sabrina J. Liu*, Brian Kim McCormick*, Peter Mendoza*,
Ned Mochel*, Ann Noble*, Catia Ojeda*, Claire Simba*,
Adam J. Smith*, Geoffrey Wade*, Nathan Woodworth*



**Member, Actors' Equity Association, the union of professional Actors and Stage Managers in the United States. This production is presented under the auspices of the Actors' Equity Los Angeles Membership Company Rule.*



The Director and Choreographer are members of the **STAGE DIRECTORS AND CHOREOGRAPHERS SOCIETY**, a national theatrical labor union.



The Designers at this Theatre are Represented by **United Scenic Artists - Local USA 829** of the International Alliance of Theatrical Stage Employees

**

The video and/or audio recording of this performance by any means whatsoever is strictly prohibited.

Director's Note

"What Shakespeare play would you like to direct?" asked Ana Rose and Bill. Many plays flashed through my mind, but *The Winter's Tale* quickly came into focus. I directed it twenty years ago at Marymount Manhattan College and ten years ago in a *ClassicsFest* staged reading at Antaeus. It is a complex play and I realized I really did want to revisit it. And doing a full production for Antaeus felt like a dream...and a pretty big challenge. Both earlier versions had featured huge casts, befitting the innumerable characters, but now I would have fourteen actors, so everyone would have to double. Shakespeare may have done it with sixteen actors, so I would have to rise to the doubling challenge too.

Having actors play dual roles reflected the plays' many dualities. First we have the two locations of courtly Sicilia and rustic Bohemia and their contrasting characters. The question I sought to answer was how do we present their polarities in a way that slowly reveals their connectedness? Then we have the tensions between the many binary themes: jealousy and forgiveness, death and rebirth, suffering and redemption, the country and the court, even tragedy and comedy. Only the passage of Time brings about a form of resolution, with unexpected reunions and, ultimately, joyful healing.

There are other challenges. Time is a character. How do we portray Time?

Also we have two characters that make a trip to the Oracle in Delphos to bring back the truth about events in Sicilia. So we are living in a world where Apollo's words hold sway, though we are clearly not in ancient Greece. How do we make this believable?

And then there is the famous stage direction, "Exit, pursued by a bear." It is possible that Shakespeare may have used a young white bear at the Globe, but so far we haven't found a suitable one.

Finally there is the statue, about which I will reveal nothing except to quote Paulina: "it is required / You do awake your faith."

These elements to my mind could not work in a modern dress production. Logic would be denied too many times, there would be far too many inconsistencies. So we have aimed at a time of our invention, but with perhaps an approximate look of the Regency period, in which the formality of Sicilia is suggested and we could imagine the spirit of the sheep shearers of Bohemia. It is a world where human suffering is hideously inflicted and deeply felt, but where redemption and joy are ultimately possible.

I am often asked what my concept is, and my answer is always the same... to trust and bring to life the text Shakespeare gives us. Any production

decisions made spring from my reading of the text, first alone, and then with my design team, and ultimately with the amazing Antaeus actors. Shakespeare did not hold with rigid rules of stagecraft, so we must trust him, and use what he gives us, even if there are puzzling challenges to reality and logic.

The Winter's Tale was first performed in 1611, and is his penultimate play, not counting *The Two Noble Kinsmen*, written with Fletcher. Along with *Pericles*, *Cymbeline*, and *The Tempest*, it is described as a romance. The main source for the play is *Pandosto* (1588), a prose romance by Robert Greene, who later would jealously call Shakespeare “an upstart crow!”

The first printing of *The Winter's Tale* was in the First Folio of 1623 so that is the authoritative text.

Elizabeth Swain, Director *The Winter's Tale*

Land Acknowledgement

Antaeus Theatre Company acknowledges the Gabrielino-Tongva peoples as the traditional caretakers of the land in the Los Angeles basin where Antaeus is located. We pay our respect to the Ancestors, Elders, and Relations – past, present, and emerging.

The Winter's Tale

Cast of Characters

EMILIA/PERDITA	Shannon Lee Clair
AUTOLYCUS/LORD III	JD Cullum
ARCHIDAMUS/JAILER/OLD SHEPHERD	Paul Eiding
HERMIONE	Kaci Hamilton
MAMILLIUS/TIME/SERVANT	Sabrina J. Liu
ANTIGONUS/GENTLEMAN	Brian Kim McCormick
FLORIZEL/LORD I	Peter Mendoza
POLIXENES	Ned Mochel
PAULINA	Ann Noble
LADY I/MOPSA/CLEOMENES	Catia Ojeda
LADY II/DORCAS/DION	Claire Simba
LEONTES	Adam J. Smith
CAMILLO/MARINER	Geoffrey Wade
LORD II/SHEPHERD'S SON	Nathan Woodworth

Special Thanks from the Director

Gideon Rappaport, Kate Anthony, Mary Morano, Ned Mochel,
Catia Ojeda, Bill Brochtrup, Ana Rose O'Halloran

ENSEMBLE - *THE WINTER'S TALE*



Shannon Lee Clair



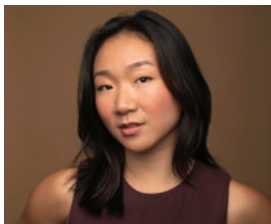
JD Cullum



Paul Eiding



Kaci Hamilton



Sabrina J. Liu



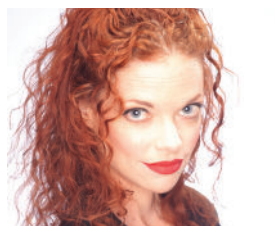
Brian Kim McCormick



Peter Mendoza



Ned Mochel



Ann Noble



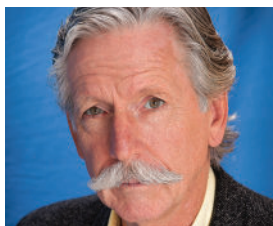
Catia Ojeda



Claire Simba



Adam J. Smith



Geoffrey Wade



Nathan Woodworth

CAST

SHANNON LEE CLAIR (EMILIA/

PERDITA): At ANTAEUS: *The Crucible*, *Top Girls*, *Uncle Vanya*, *Diana of Dobsons*, and many readings and workshops. Other Theaters include: La Mirada Theatre, Will Geer Theatricum, L.A. Theatre Works, MainStreet Theatre, New Canon Theatre Company (Monterey, CA), Book-It Rep (Seattle, WA), and Harlequin Productions (Olympia, WA). Film credits include leading roles in *The Dangle* (Best Short at the California International Film Festival) and in the upcoming short *When You Sleep*. As a writer, Shannon has been a Top 50 List-Semifinalist in the Nicholl Screenwriting Competition, a Semifinalist for Stowe Story Labs' Tangerine Fellowship, and a Quarterfinalist in the Page Awards. Education: the London Academy of Music and Dramatic Art (LAMDA) and Princeton University.

JD CULLUM (AUTOLYCUS/LORD III):

An Antaeian since 1993, notable appearances include: *The Tempest*, *The Cripple of Inishmaan*, *The Hothouse*, *Hedda Gabler*, *Cloud 9*, *Peace in Our Time*, *As You Like It*, *The Malcontent*, and *King Lear*. Other Local Theaters: Mark Taper Forum, Geffen Playhouse, Kirk Douglas Theater, Pasadena Playhouse, South Coast Repertory, and Laguna Playhouse. Film: *Lone Ranger*. Television: *CSI: Los Angeles*, *Ted*, *The Orville*, *Aquarius*, *Code Black*, and *Bones*.

PAUL EIDING (ARCHIDAMUS/JAILER/

OLD SHEPHERD): At ANTAEUS: *Cousin Bette*, *An American Tale*, *The Man Who Had All The Luck*, *You Can't Take It With You*, *The Hothouse*, and *Measure for Measure*. Other Local Theaters: The

Echo, L.A. Public Theatre, L.A. Stage West, Pico Playhouse, Matrix, Odyssey, The Cast Theatre, Whitefire Theatre, L.A. Theatre Works. Film: *Frank & Emmet*, *The Incredibles II*, *Submarine Kid*, *Nightbreaker*, *The Transformers Movie*, *Madhouse*. TV: *Grey's Anatomy*, *Star Trek: TNG*, *ER*, *West Wing*, *Mad About You*, *House of Lies*, *CSI: Miami*, series regular, *The Charmings*, Approximately 150 video games, and numerous animated series. "Thank you for supporting live theater."

KACI HAMILTON (HERMIONE):

At ANTAEUS: Debut. South Coast Repertory: *The Little Foxes*, *Pacific Playwrights Festival*, *Raisin in the Sun* (u/s), *A Christmas Carol* (u/s). Other Local Theaters: The Davidson/Valentini Theatre (Los Angeles LGBT Center), Hudson Theatres, African American Theatrical Ensemble. Regional Theater: Ashland New Plays Festival, Commonwealth Shakespeare Theatre, The Player's Theatre, Fairbanks Shakespeare Theatre, Perseverance Theatre. International: World Shakespeare Congress (Brisbane, Australia). TV + Shorts: *Getaway*, *The Life and Death Of...*, *Dying Cowboy*, *Rotten Apple*, *Good Mourning*. IG: @thesweetbacon. kacihamilton.com

SABRINA J. LIU (MAMILLIUS/

TIME/SERVANT): Sabrina J. Liu is a Los Angeles and San Diego-based actor. At ANTAEUS: Debut. Regional credits: *Here There Are Blueberries* (La Jolla Playhouse), *In Every Generation* (San Diego Repertory Theatre), *Electra* (National Women's Theatre Festival). Sabrina has also contributed to new work development at the Eugene O'Neill Theater Center, South Coast Repertory,

The Old Globe, La Jolla Playhouse, and San Diego Repertory Theatre. She graduated in 2023 from the University of California, San Diego with her M.F.A. in Acting. sabrinajliu.com

**BRIAN KIM McCORMICK
(ANTIGONUS/GENTLEMAN):**

At ANTAEUS: Debut. SoCal Theaters: South Coast Repertory, San Diego Repertory, Musical Theatre West, Ammunition Theatre. Other Theater: Asolo Repertory, Theatre Latté Da, Oklahoma City Rep, TheatreSquared, Mixed Blood, Olney Theatre, Children's Theatre Company, Forestburgh Playhouse, Theatre Mu, Pan Asian Repertory, The Village Theatre, NAAP, NYTW. Film: *Daruma*. Voiceover: *Squid Game*, *The King's Affection*, *Queenmaker*, *Wo Long: Fallen Dynasty*, *Pokémon, Yu-Gi-Oh!*, *Winston Chu vs. The Whimsies*. IG: [@asian_with_a_camera](https://www.instagram.com/asian_with_a_camera)

PETER MENDOZA (FLORIZEL/LORD I):

At ANTAEUS: Ferdinand in *The Tempest*, Belyaev in *Three Days in the Country*. Other Theater: Oscar in *Sweat* (Mark Taper Forum), Elliot in *Elliot, A Soldier's Fugue* (Kirk Douglas Theatre), Oedipus in *Oedipus El Rey* (Kirk Douglas Theatre, Digital Stage), Henry Reyna in *Zoot Suit* (Mark Taper Forum, u/s), Hason in *Mojada: A Medea in Los Angeles* (The Rep. Theatre of St. Louis), Rafael in *La Piedra Oscura*, Don Carlos in *Los Empeños de una Casa*, Paco in *Salon Mexico*, Don Juan Tenorio in *El Burlador de Sevilla* (Bilingual Foundation of the Arts). Television: *Perry Mason* (HBO), *From Scratch* (Netflix), *Shooter* (USA), *NCIS* (CBS), *Snowfall* (FX), *Casual* (HULU), *On My Block* (Netflix). Film: *Dead Bullet*, *Nathan's Kingdom*,

Parasites, *Tecato*, *Hello to Never*, *Ana Maria in Novella Land*. IG: [@petertheatre](https://www.instagram.com/petertheatre)

NED MOCHEL (POLIXENES/FIGHT CAPTAIN):

Ned is happy to be on the ANTAEUS stage again. Other Antaeus productions include *Hedda Gabler* and *Native Son*. He had the pleasure of reprising his role in *Native Son* at the Kirk Douglas Theatre when it was chosen to remount in 2019 as part of their annual Block Party. Other LA Theater credits include the Los Angeles premiere of Samuel D. Hunter's *A Permanent Image* at Rogue Machine Theatre and *All My Sons* at Pacific Resident Theatre. In Chicago, Ned worked at The Goodman Theatre, The Court Theatre, Chicago Shakespeare, Organic Theatre, and many other Midwest regional theaters and Shakespeare festivals. In his other life as a fight choreographer, Ned built the fights for *Hamlet* and *Les Liaisons Dangereuses* at ANTAEUS.

ANN NOBLE (PAULINA):

At ANTAEUS: *The Malcontent*, *Peace In Our Time*, *The Crucible*, *The Liar*, *Hedda Gabler*. Other SoCal Theaters: Echo (member), Rogue Machine (member), South Coast Rep, EST-Santa Barbara, ICT-Long Beach, Malibu Playhouse, Sierra Madre Playhouse, LGBT Center, The Road, The Victory, Moving Arts. International: Edinburgh Fringe & Sydney Fringe. Directing: Echo, Warriors For Peace, Holocaust Museum, Museum of Tolerance, LGBT Center, LifeChild Prods, 2 Heads Are Better Prods. Playwriting: LA, NYC, Chicago, DC, Ashland, Boston, Serbia, Australia. Teaching: AMDA, Moving Arts, YWCA, Homeboy Inds. Chaplain: Prism Restorative Justice in the LA County Jails. IG: [@sparksjacks](https://www.instagram.com/sparksjacks)

**CATIA OJEDA (LADY I/MOPSA/
CLEOMENES/DANCE CAPTAIN):**

At ANTAEUS: 90024: *Westwood (The Zip Code Plays)*, *Circle Forward* and *Turning Over (Lab Results)*. Los Angeles Theater: *Brendan* (Theatre Banshee, Ovation nomination); *It is Done* (Site-Specific, dir. Michael Michetti); National Tour: *The 101 Dalmatians Musical*, dir. Jerry Zaks. New York and Regional Theater: Playwrights Horizons, Williamstown Theatre Festival, Gallery Players, Astoria Performing Arts Center, Engeman Theater, Ogunquit Playhouse, Riverside Theatre, FL. TV: Series Regular on Amazon's *Just Add Magic*, Recurring/Guest appearances: *Surfside Girls*, *Malibu Rescue*, *Selena: The Series*, *Grey's Anatomy*, *Hawaii Five-O*, *American Housewife*, *Criminal Minds*, *30 Rock*, *Law & Order*. Catia starred in the indie feature film *Closure* which picked up two film festival awards for Best Actress. Occasionally recognized as "that wife" or "that mom" from "that commercial," she's a real-life wife to writer/director Alex Goldberg, and a real-life mom to their two sons.
catiaojeda.com

**CLAIRE SIMBA (LADY II/DORCAS/
DION):** Theater credits include work at The Old Globe, Theatricum Botanicum, Bucks County Playhouse, Cincinnati Playhouse, Harlem Shakespeare Theater. Film/TV includes: *Madam Secretary*, *Shadow of Doubt*, *Morbayassa* (Official Cannes and SIFF films festivals), *Les Pirogues des Hautes Terres* (Official Monte Carlo TV Festival), *Pandemic Bread* (LA Asian Pacific Film Festival). IG: @clairesimba clairesimba.com

ADAM J. SMITH (LEONTES): At ANTAEUS: *Hamlet*, *Cloud 9*, *As You Like It*, *Henry IV, Part One*, *The Curse of Oedipus*. Other Theater: Pasadena Playhouse, CTG - The Kirk Douglas and Mark Taper Forum, South Coast Rep, International City Theatre, La Jolla Playhouse, Disney Concert Hall, 6th Act, Chalk Rep, The Blank, EST/LA, Boston Court, Ojai Playwrights Conference, The Road, Chautauqua Theater Company (NY), Center for New Performance/Huntington Gardens, numerous Off- and Off-Off-B'way. Film: Zack Snyder's *Rebel Moon I & II*, *Taken 3*, *Bloody Bridget*, *Zombie Strippers*, *Deceit*. TV: *The Good Doctor*, *Jane the Virgin* (recurring), *Orville*, *Scandal*, *Castle*, *90210*, *Medium*, *Without a Trace*, *Numb3rs*, *Victorious*, *Chemistry*, *As the World Turns* (recurring), among others. Emmy Award Winner for *When Things Get Small*. VO work in video games, TV/online narration, ads, audio drama podcasts, dubbing, and educational programming. Faculty member at CalArts School of Theater. M.F.A.: UCSD/La Jolla Playhouse, B.A.: Duke (Magna cum laude).

**GEOFFREY WADE (CAMILLO/
MARINER):** At ANTAEUS: *The Man Who Had All The Luck*, *Mother Courage*, *Mercadet*, *The Malcontent*, *Tonight at 8:30*, *The Autumn Garden*; co-director of *The Crucible*; teacher in the Antaeus Academy since 2003; Company photographer for many years. Most recently played Snape in *Harry Potter And The Cursed Child* (SF). Other Local Theaters: South Coast Rep; La Jolla Playhouse, La Mirada; Odyssey; The

Road; L.A. Theatre Works. He has worked on Broadway and Off. Regional: Old Globe, GeVa; The Guthrie, Cincinnati Playhouse, Rep Theater of St. Louis, Great Lakes Shakespeare, Center Stage, Caldwell, Philadelphia Drama Guild, many leading roles at Vermont's Weston Theater. National Tours: *Crazy For You*; *Curious Incident Of The Dog In The Nighttime*. TV: *Mad Men*, *NCIS*, *Numb3rs*, *ER*, *Monk*, *Scrubs*, *Brothers and Sisters*, *Law and Order*, etc. Film: *City Hall*, *The Divide*, and Steven Spielberg's *The BFG*. Trained at Central, London.

NATHAN WOODWORTH (LORD II/ SHEPHERD'S SON): At ANTAEUS: Debut. Other Theater: *Johnny Got His Gun* (dir. Tim Robbins) at The Actors' Gang (LA Times Critics Choice); *American Buffalo*, *Red*, *Brilliant Traces*, *The Dumb Waiter* at Volcanic Theatre Pub; *The Living Boy and the Girl with No Bones* (a Tale of the Karuk Tribe)—staged reading—at MishMash Festival, London (also writer and director). Film/TV/New Media: *The Librarians* (TNT); *TuTu Grande* (Nightmares Film Festival Award—Best Actor (Short)); *The Purse: A Dream in Two Acts* (Bend Film Festival—Audience Award (writer/producer)); *The Barista Times*; *BOTANY BAY: Spring*; *The Appraiser*. Education: M.A. Classical Acting for the Professional Theatre at London Academy of Music & Dramatic Art (LAMDA); The Groundlings (Advanced Lab); UCB (improv 401 graduate); The Actors' Gang Company (2017-2019). Awards: Fulbright Scholar (Fulbright/John Wood LAMDA Award 2021-22). nathanwoodworth.com

PRODUCTION

ELIZABETH SWAIN (DIRECTOR):

is an English-born actor, director and teacher who has lived in Los Angeles since 2008 and is a member of ANTAEUS. Recent directing credits include: *King Lear* for Southwest Shakespeare, *Hamlet* and *Measure for Measure* for ANTAEUS (the latter co-directed with Armin Shimerman), *The Comedy of Errors* for The Classical Theatre Lab, *Two Noble Kinsmen* for the Kingsmen Shakespeare Company, and *Early Birds* for Moving Arts. Other credits include: *An Evening of Betrayal* for The 6th Act, *Forever House* at Skylight Theatre Company, *Macbeth* and *A Midsummer Night's Dream* for CSULB, Marston's *The Malcontent* for ANTAEUS, *Master Harold and the Boys* for Cape May Stage. She was awarded an NEH Fellowship to study Shakespeare's staging at the Blackfriars in Virginia and Shakespeare's Globe in London. As an actor she made her Broadway debut in *Charley's Aunt* with Maureen O' Sullivan and Louis Nye. Other Broadway credits include: *Crown Matrimonial* with Eileen Herlie and George Grizard, *Sherlock Holmes* with Robert Stephens, and a featured role in the NYC Opera's *The Crucible*. At ANTAEUS, she acted in *Macbeth*, *The Curse of Oedipus* and *Top Girls*. She played the Ghost in the LA Women's Shakespeare Company's *Hamlet* and in *The Clean House* for Cal Rep. On television she appeared in *One Life to Live*, *As the World Turns* and played Emily on *Guiding Light* for five years. She has taught at CSULB, Cal Arts and for the Antaeus Academy and is Professor Emerita at Marymount

Manhattan College where she taught until her relocation to Los Angeles.

BILL BROCHTRUP (ARTISTIC

DIRECTOR): At ANTAEUS: *Cloud 9*, *Mrs. Warren's Profession*, *Peace In Our Time*, *The Malcontent*, *Cousin Bette*, *Tonight at 8:30*, *Pera Palas*. Other local Theaters: Geffen Playhouse, South Coast Repertory, Ensemble Theatre Company, Pasadena Playhouse, The Fountain Theatre, Boston Court Pasadena, Rogue Machine Theatre, L.A. Theatre Works. Film: *Life as We Know It*, *He's Just Not That into You*, *Ravenous*, *Hypnotized*. TV series regular: "John Irvin" on *NYPD Blue*, *Public Morals*, *Total Security*. TV recurring: "Dr. Joe" on *Major Crimes*, *Shameless*, *After Forever*.
billbrochtrup.com

ANA ROSE O'HALLORAN (PRODUCING EXECUTIVE

DIRECTOR): Ana Rose joined ANTAEUS in 2015 and has produced over 20 productions during her tenure. Previously, she served as the Senior Director at The Pablove Foundation, and in various roles in the development department at Center Theatre Group. She received her M.F.A. in Theatre Management from California State University, Long Beach, and a B.F.A. in Theatre Management and a B.F.A. in Performance from Ohio University.

FREDERICA NASCIMENTO (SCENIC

DESIGNER): Works in theater, film and multidisciplinary design in the US and internationally. Being an architect informs her work with a focus on materiality, storytelling and conceptual thinking, creating spaces and environments that are alive and empowered by

collaboration. MFA in Scenic and Production Design for Film at NYU/TSOA, scholar with Calouste Gulbenkian Foundation and FLAD, member of the Portuguese Architects Association, Usual Suspect at New York Theatre Workshop, USA 829/IATSE. Faculty at LA Pierce College, LASC, and Guest Artist (Scenic/Costume Design) at CSUN. Nominated for NAACP, Ovation and LADCC Awards. In 2022, she received the Los Angeles Drama Circle Critics Award in Best Scenic Design for *An Octoroon* by Branden Jacobs-Jenkins, directed by Judith Moreland at the Fountain Theatre. Recent designs at A Noise Within (Resident Artist): *A Midsummer Night's Dream*, and *The Book of Will*, directed by Julia Rodriguez-Elliott/Geoff Elliott. IG: @fredericanascimento; fredericanascimento.com

CAROLYN MAZUCA (COSTUME

DESIGNER): Carolyn is a Texas born and Los Angeles-based Costume Designer for stage and screen. Carolyn's designs have most recently decorated the theatrical production, *La Havana Madrid*, at San Juan Capistrano with South Coast Repertory and film, *Body Language*, filmed in Duluth, MN. Other recent works include theatrical productions: *Kiss of The Spider Woman* at A Noise Within and *Native Gardens* at Dallas Theatre Center. She is the Costume Designer for the upcoming theatrical production of *I Am Not Your Perfect Mexican Daughter* at Greenway Court Theatre. Carolyn is an active member of the IATSE Costume Designers Guild 892. She worked as an Assistant Costume Designer on union productions *Perry Mason Season 2* and *The L Word: Generation Q Season 2*.

Carolyn earned her B.F.A. in Costume Design from Carnegie Mellon University. Carolyn can't wait to see what amazing future projects await her!
carolynmazuca.com

VICKIE J. SCOTT (LIGHTING

DESIGNER): Vickie has created lighting and scenic designs for dance and theater productions throughout the U.S. and abroad. Her recent work includes lighting design for *The Tempest* directed by Nike Doukas at ANTAEUS, *Is Edward Snowden Single?* by Kate Cortesi, and the lighting and scenic design for *The Shot*, a new play about Katharine Graham, by Robin Gerber, and *Bulletproof Unicorn* by Stacie Burrows, all in New York City, and the lighting designs for *A Great Wilderness* and *Little Theatre* at Rogue Machine in Los Angeles. Vickie is on the faculty at UC Santa Barbara, a member of the Illuminating Engineering Society, the Association for Lighting Production and Design, Women In Lighting + Design, and United Scenic Artists Local 829. Her book *Contemporary Dance Lighting: The Poetry and the Nitty-Gritty*, co-authored with Carol M. Press, was published in September 2022.

JEFF GARDNER (SOUND DESIGNER):

Jeff is an award-winning sound designer, foley artist and actor. Jeff has designed and performed throughout the country. At ANTAEUS: *The Zip Code Radio Plays*, *SHE*, *The Tempest*, *Eight Nights*, *The Abuelas*, *Native Son*, *Caucasian Chalk Circle*, *Diana of Dobson's*, *The Cripple of Inishmaan*, *The Little Foxes*, *The Hothouse*, *Cat On A Hot Tin Roof*, *Top Girls*, *Picnic*, *Wedding Band*, *The Crucible*, *The Seagull*. Other Theaters: Denver Center for the Performing Arts,

Williamstown Theatre Festival, Cleveland Playhouse, Baltimore Center Stage, The Shakespeare Theatre (DC), Arena Stage, The Kennedy Center, Edinburgh Festival Fringe, Mark Taper Forum, Geffen Playhouse, The Kirk Douglas Theatre, The Wallis Annenberg Center, Pasadena Playhouse, A Noise Within, Boston Court Pasadena, Circle X Theatre, Echo Theater, IAMA Theatre, Rogue Machine, Skylight Theatre. Los Angeles Stage Alliance Ovation Awards, Stage Raw and LA Drama Critics Circle Award Winner. Jeff can be seen at L.A. Theatre Works where he regularly performs live sound effects. jeffthomasgardner.net

ANNIE YEE (CHOREOGRAPHER):

She's thrilled to return to ANTAEUS! Annie is an award winning, and Ovation nominated choreographer from Los Angeles. Theaters: The Mark Taper Forum, East West Players, South Coast Repertory, La Jolla Playhouse, A Contemporary Theatre, Ma-Yi Theater Company, Baltimore Center Stage, LA Opera, Los Angeles Theatre Center, Boston Court Pasadena, The Fountain Theatre, A Noise Within, Artists at Play. Shows: *M. Butterfly*, *Everybody*, *King of the Yees*, *SUMO*, *An Octoroon*, *On Gold Mountain*, *Interstate*, *The Golden Dragon*, *The Dance and the Railroad*, *The Children*, *Made in Bangkok*, *I Don't Have to Show you no Stinking Badges*, *Detained*, *Escapegoat*, *The World of Extreme Happiness*, and *Dream of the Red Chamber*. Annie honorably serves on the Executive Board of Stage Directors and Choreographers and Cornerstone Theater Company. Upcoming: *Grumpy Monkey*, *The Musical* at Pasadena Playhouse. Thank you and love to parents

Tommy and Nancy Yee, family and husband actor Stan Egi.

AARON LYONS (PROPS DESIGNER):

does theater. Lots of it. As an actor, director, designer, producer, stage manager, technical director, and crew member, he has over 250 credits on his National and International resumes. aaronlyons.net

DONNA CRIBARI (COMPOSER):

Recipient of numerous ASCAP Awards, Two Meet the Composer Grants, and Westchester Broadway Theater's Cab Calloway Lifetime Achievement Award. Range of work includes musicals, dance, opera, choral music and songs of a variety of genres. Musical Director, conductor and accompanist for countless productions Off-Broadway, Regional, community theaters and college groups. Adjunct Assistant Professor of Music/Theater Arts at Marymount Manhattan College for 35 years. Ms. Cribari built the Musical Theater program, composed incidental music for Mainstage productions. Including: *The Lucky Chance*, *The Old Law*, *Arcadia*, *Camille* and *The Winter's Tale*, all directed by the gifted Elizabeth Swain. Currently, Donna is music director for On the Isle, a theater company in Nantucket.

KAREN OSBORNE (PRODUCTION STAGE MANAGER):

At ANTAEUS: *Love and Information*, *Measure for Measure*, *The Abuelas*. At Theatricum Botanicum: *A Perfect Ganesh*, *A Midsummer Night's Dream* (5 seasons), *The West Side Waltz*, *Other Desert Cities*, *August Osage County*, *Merchant of Venice*, *Romeo and Juliet*, *Titus Andronicus*, *As You Like*

It. AMDA: *Into the Woods*, *Urinetown*, *The Merchant of Venice*, *Sister Act*, *Permanent Collection*, *Commedia Del'Arte*, numerous dance performances and showcases. Other: *Judas Kiss* at Boston Court Pasadena, *Radiant Vermin* with Door Number 3, *Sisters Three* with The Inkwell Theater, *Priscilla Queen of the Desert* at Celebration (Ovation award winner), *Ashes to Ashes*, *Richard the Second*, and *Shrek the Musical*. Education: Bachelor of Psychology Honors Degree from Brunel University, England.

KAITE BRANDT (ASSISTANT DIRECTOR/PRODUCTION DRAMATURG):

At ANTAEUS: *The Tempest*, *Love and Information*, *Everybody*, *Hamlet*, *Measure for Measure*. Other Theaters: *Julius Caesar* (Warriors for Peace); *Much Ado About Nothing*, *A Midsummer Night's Dream*, *Love's Labour's Lost* (Sierra Madre Shakespeare Festival); *Love's Labour's Lost* (Chase What Flies); *Much Ado About Nothing* (The Unlikely Shakespeare Company) Video Games: *The Big Con*, *Fossil Echo*, *Almightree*: *The Last Giver*. Training: B.A. in Directing, Columbia College Hollywood

ADAM MEYER (TECHNICAL DIRECTOR):

Adam has been hanging around the ANTAEUS buildings since 2004. He took over as Production Manager in 2011 and oversaw every production prior to his departure in 2022. Now, he's BACK! Adam is also a company member and has acted in numerous plays and readings at ANTAEUS. He credits a lot of his success to this warm and loving theater company. But he would be nothing without the

support and love from his family, wife Rebecca, and two sons, Leo and Golden.

CASEY COLLASO (ASSISTANT STAGE

MANAGER): Casey is excited to be a part of her first Antaeus production after having worked as the Audience and Donor Relations Intern in 2022. She earned her B.A. in Theatre Arts with an emphasis in Directing at California State University, Fullerton. Previous credits include: *A Midsummer Night's Dream* (Assistant Director), *Policarpa: Apocalypse Sur Amerikka* (Assistant Director), and *Within Reach* (Assistant Stage Manager).



Peter Mendoza, Peter Van Norden, and Anja Racić in *The Tempest* (2023),
Photo by Frank Ishman

Support Antaeus Today!

As a nonprofit organization, we rely on contributions for the majority of our income. Everything we do is made possible by the extraordinary generosity of this community! Donations help us produce award-winning productions; create paying jobs for artists; offer arts education programs and accessible tickets to our local community; support the development of exciting new plays; and so much more.

Join our community of supporters today! If you'd like to make a pledge, arrange a recurring gift, or inform us about a planned gift, please contact Producing Executive Director, Ana Rose O'Halloran, at anarose@antaeus.org or 818.506.5436.

Thank You to our Extended Family
of Loyal Supporters

CORPORATE SPONSORSHIP

Join other business leaders by supporting Antaeus Theatre Company's award-winning programming through sponsorship and matching gift programs.

Corporate Sponsors

Amazon Associates

Chevron

Comcast NBC Universal

Deutsche Bank Americas Foundation

The Kroger Co. Foundation

Pasadena International Film Festival

Paul Hastings LLP

The Walt Disney Company Foundation

*Based on donations made between 12/1/22-12/15/23
+ Indicates monthly sustaining donor*

PRODUCER'S CIRCLE

The Producer's Circle ensures we are never limited in our artistic pursuits on our stage. This group believes in sustained excellence and allows Antaeus to produce plays no matter the cast size or production needs.

\$50,000+

Kiki & David Gindler
Los Angeles County Department of Arts and Culture
Perenchio Foundation

\$25,000+

The Ahmanson Foundation
Sonja Berggren & Patrick Seaver
The Michael J. Connell Foundation
The David Lee Foundation
The Ralph M. Parsons Foundation
The Shubert Foundation
State of California

\$15,000+

Rosemary A. Hernandez
Los Angeles New Play Project
National Endowment for the Arts
Jocelyn Towne & Simon Helberg
Mary Jo & David Volk

*Based on donations made between 12/1/22-12/15/23
+ Indicates monthly sustaining donor*

DIRECTOR'S CIRCLE

The Director's Circle is a distinguished group of theater lovers who provide general operating support to Antaeus. In recognition of this support, they receive invitations to special events with Antaeus' artists.

\$10,000+

The Green Foundation
Scott Fraser & Cathy Jurca
Debra Thompson & Lawrence Riff

\$5,000+

Bill Brochtrup
Community Foundation of the Verdugos
Evie & John DiCiaccio
Ruth Eliel & Bill Cooney
Glendale Educational Foundation
J Robin Groves+
Mary Lambert
Suzy Moser
Molly Munger & Steve English
Anthony J. Oncidi
Melinda Peterson & Philip Proctor+
Amy Proctor & Lloyd Roberson II
Dan Putman
Jaye Scholl & Charlie Bohlen+
Laura A. Seigle
Joan Pirkle Smith & Kurtwood Smith
Arlene Vidor
Belinda & Jack Walker
April Webster

*Based on donations made between 12/1/22-12/15/23
+ Indicates monthly sustaining donor*

DIRECTOR'S CIRCLE

The Director's Circle is a distinguished group of theater lovers who provide general operating support to Antaeus. In recognition of this support, they receive invitations to special events with Antaeus' artists.

\$2,500+

Tony Shaloub & Brooke Adams
Steven Warheit & Jean Christensen
Bruce & Valerie Merritt
Michael Morrell
Richard Nathan+
Cara Robertson
Jennifer & Matthew Rowland
R. Scott Thompson
Wendy & Peter Van Norden
Karen Malina White

\$1,500+

Amy Aquino & Drew McCoy
F. K. Conner Baldwin
Gigi Bermingham
Loraine Despres & Carleton Eastlake
Dawn Didawick & Harry Groener+
Jeanie Fiskin
Matthew Goldsby
Paul M Holmes+
Susan & Robert Long
Kitty McNamee & Paul Lazarus
Ana Rose & Grant O'Halloran+
Michael R. Oppenheim
Gwynne & Robert Pine+
Willow Cabin Productions

*Based on donations made between 12/1/22-12/15/23
+ Indicates monthly sustaining donor*

STAGE CREW

The Stage Crew community of donors support the production of great plays,
innovative arts education outreach, and the training of the next generation of actors.

\$1,000+

Robert Leventer & Jenna Blaustein
The Caplin Foundation
Paul Eiding
Anonymous
Patricia & Richard Hughes
Kahn Education Foundation
Jack & Maureen Kolosky

Dakin Matthews & Anne McNaughton
Dan Oliverio+
Deborah E. Reed
Robert Ronus
Ned Schmidtke+
In Dakin's Honor
Larry Title & Ellen Shavelson

\$500+

Robert C. Anderson
Kathy Baker & Steve Robman
Joni & Miles Benickes
Anne Gee Byrd
Stephanie & Dennis Cohen
Felicia Davis & Eric Gutshall
Paula Devine
Kathleen & James Drummy
Barbara Durham+
Drs. Marjorie Marks Fond & Richard Z. Fond
Dr. Jerome Hunt & Alvin Ford Jr.
Leslie & Robert Gordon+
Anonymous
Anthony & Alizon Harris
Melanie L. Hayes+
Mark & Janice Kaspersen
Bill & Priscilla Kennedy
Daniel Castellaneta & Deborah Lacusta

Jill Maglione & Paul Van Dorpe
Philip McKinley
Myron Meisel
The Millikan Family+
Selwyn & Laura Oskowitz
Clarissa Park
Timothy & Jeanne Sakata Patterson
Ellen K. Rentz
Gregory Shapton & Barbara Rugeley
George & Carolyn Seitz
Liza Seneca
In Honor of Dakin Matthews
Kitty Swink & Armin Shimerman
Drs. Ligia & William Toutant
Tyree & Les Wieder
Patty Woo & Steven Poretzky
Richard Yaffe

\$100+

Kathleen Ross-Allee &
John Allee
Heather Allyn & Rob Nagle+
Tony Amendola & Judith Marx
Polly & Jamie Anderson
Annet Arakelian
Pier Charlene Avirom &
David Avirom
Mary & Perry Bankston

Ron, Elayne, Krysten Bittner
and Chris Ruiz
Joan Borgman &
John Apicella+
Amy Borgman &
Michael Fiorillo
Eileen Boyd
Mark Bramhall
Kaite Brandt+

Marie Pal-Brown &
Garrett M Brown
In Memory of Melinda
Peterson
Bill Butler+
Mary Casey
Chancy Memorial Foundation
Karen Chiella+
Jacqueline Chooljian

*Based on donations made between 12/1/22-12/15/23
+ Indicates monthly sustaining donor*

Nanci Christopher	Alice & Sam Johnston+	Anna Quirino-Miranda
Kathy Connell & Daryl Anderson	Ann Jopling	Gustavo Herrera & Cristina Ramirez
Karen Constine	David & Denise Kautter	Richard Reinhart
Jake & Leslie Crabtree	Kimberly Kehoe+	Stephen & Melanie Rockwell
JD Cullum	Dr. Kristine Penner Klein & Steven Klein	Bianca & Lance Rucker
Sondra Currie & Alan J. Levi	Emily Kuroda & Alberto Isaac	Christine Sanders
Diana Daves & John McLaughlin	Bonnie & Jim Lambert	John Schuning & Gregory Ross+
Andrew R. DeMar Family Foundation	The Lanzafame Family+	Ruth & David Seigle
Anonymous	Howard & Patrick Leder- Morrow	Steven Seliger
Pete & Julie Gutman Dickinson	Steven Llanusa	Cordelia & Sidney Sherland
Michael Dorn	Elaine Lockhart-Mummary	John & Judy Sherman
Marni Farmer	Victor & Anna Luke	Stephanie Shroyer
In Memory - Melinda Peterson	Robert Machray	John & Juliana Sloan+
James Freed	Fred Manaster	Margaret & David Sloan
Rob Friedman	Kipp Marcus	Adam J. Smith
Bill Frischman	Abigail Marks+	Peter James Smith
Barbara & Frederick Gable	Jeffrey Gale & Julane Marx	Christopher John Smith
Olga Garay-English+	Anna Mathias	Devon Sorvari & Steven Brand
Joshua Gitelson	Patricia Mayer	Patricia & Lawrence Sparks
Carlotta Glackin	Tulis McCall	Zane Stanley
Kevin Goetz	In honor of Jack and Belinda Walker and Family	Nadya Starr
Susan Gosden	Nan McNamara & Lindsay Schnebly	James Sutorius
Howard Gradet	Marlene F. Mills	Elizabeth Swain
Gretchen & Dick Grant	Elyse Mirtó	Dale E. Turner
Geoff Griffith	Kerry Mohnike+	Connie & Ivan Vance
Allen Grogan	In Memory of Melinda Peterson	E. J. von Schoff
Michael Barker & Heidi Hanson+	Arianne Neumark	Laurie & Stanley Whitcomb
Jeanette & Warren Harkins	Allen Newcomb	Bernard White
Beverly Higginson	Nancy Niederman	Pat & Paul Willson
Shannon Holt	Devon O'Brien+	Anonymous
Katie Hotchkiss+	Gregg & Debbie Oppenheimer, In Memory of Melinda Peterson	Anonymous
Merrilee & Marty Howard	In Memory of Melinda Peterson	In Memory of Melinda Peterson
Carol Howell	Anonymous	
Kevin Hudnell	Penny Peyser & Doug McIntyre	
Sheila & Milton Hyman Foundation	Marilyn Plutae	
Freya & Mark Ivener	Deborah Podus	
Tom Jacobson & Ramone Muñoz	Patricia Poet	
Peter & Dixie Johnson		
Andrew F. Johnson		
Bjorn Johnson		

*Based on donations made between 12/1/22-12/15/23
+ Indicates monthly sustaining donor*

STAFF

PRODUCING EXECUTIVE DIRECTOR

Ana Rose O'Halloran

ARTISTIC DIRECTOR

Bill Brochtrup

EXECUTIVE ASSISTANT

Courtney Agustin

TECHNICAL DIRECTOR

Adam Meyer

BOOKKEEPER

Amy Michner

OPERATIONS MANAGER

Kristin Weber

BOARD OF DIRECTORS

Evie DiCiaccio, Chair

Laura Seigle, Treasurer

Debra Thompson, Secretary

Bill Brochtrup

Dawn Didawick

Kiki Ramos Gindler

Ana Rose O'Halloran

Clarissa Park

Lloyd Roberson II

Reba Thomas

Peter Van Norden

Arlene Vidor

April Webster

BOARD EMERITUS

Stuart Berton

Bob Craft

David Gindler

Mary Lambert

Jack Walker

PRODUCTION & FRONT OF HOUSE

LEAD SCENIC PAINTER

Orlando de la Paz

MASTER ELECTRICIAN

Ryan Dempsey

SCENIC PAINTER

Marygold Martinez

CARPENTERS/ELECTRICIANS

Cody Andersen, Nic Dagraca,

Al Hathaway, Aaron Lyons,

Adam Meyer

DRAPER

Matthew Kesner,

Georgi Ridgway

PATRON EXPERIENCE ASSOCIATES

Kaite Brandt, Evelyn Coffey,

Tori Eriavez, Farrah Gharibian,

Juls Hoover, Spencer Marchewka,

Jessaica Shields, Max Tel,

Jenna Zhu

TAILOR

Carson Julian

COMPANY MEMBERS

John Achorn, Bernard K. Addison, Rhonda Aldrich, John Allee, Heather Allyn, Tony Amendola, John Apicella, Ben Atkinson, Tessa Auberjonois, Paul Baird, Gigi Bermingham, Daniel Bess, Daniel Blinkoff, John Bobek, Andrew Borba, Chad Borden, Christopher Breyer, Bill Brochtrup, Anne Gee Byrd, Nick Cagle, Jane Carr, Jon Chaffin, Emily Chase, Kendra Chell, Shannon Lee Clair, Josh Clark, Avery Clyde, Barry Creyton, JD Cullum, Paul Culos, Nicholas D'Agosto, Gregg T. Daniel, Julia Davis, Jason Delane Lee, Ramón de Ocampo, John DeMita, David DeSantos, Seamus Dever, Etta Devine, Gabriel Diani, Dawn Didawick, Francia DiMase, Mark Doerr, Daniel Dorr, Nike Doukas, Sarah Drew, Cherish Monique Duke, Paul Eiding, Nicole Erb, Terry Evans, Scott Ferrara, James Ferrero, Martin Ferrero, Karianne Flaathen, Julia Fletcher, Bo Foxworth, Jeff Thomas Gardner, Matthew Goldsby, Robert Goldsby, Alexandra Goodman, Eve Gordon, Emily Goss, Belen Greene, Ellis Greer, Harry Groener, Matthew Grondin, Arye Gross, Tim Halligan, Simon Helberg, Alexandra Hellquist, Steve Hofvendahl, Shannon Holt, Sally Hughes, Alberto Isaac, Antonio Jaramillo, Judy Louise Johnson, Dylan Jones, Veralyn Jones, Gerard Joseph, Luis Kelly-Duarte, Connor Kelly-Eiding, Michael Kirby, Lily Knight, Tamara Krinsky, Chelsea Kurtz, Mildred Marie Langford, Adrian LaTourelle, Paul Lazarus, Jay Lee, Emily Lenkeit, Ian Littleworth, Melanie Lora, Henri Lubatti, Jazzlyn K. Luckett, Aaron Lyons, Jill Maglione, Abigail Marks, Leo Marks, Kwana Martinez, Anna Mathias, Kellie Matteson, Dakin Matthews, Sandra McClain, Don McManus, Anne McNaughton, Mike McShane, Desirée Mee Jung, Bill Mendieta, Peter Mendoza, Adam Meyer, Lynn Milgrim, Richard Miro, Elyse Mirto, Rosalyn Mitchell, Ned Mochel, Rebecca Mozo, Rob Nagle, Ann Noble, Jeffrey Nordling, Catia Ojeda, Linda Park, Robert Pine, Erin Pineda, Lawrence Pressman, Philip Proctor, John Prosky, Deborah Puette, Anna Quirino-Miranda, Carolyn Ratteray, Lloyd Roberson II, Spencer Rowe, Jeanne Sakata, Ned Schmidtke, Liza Seneca, Armin Shimerman, Stephanie Shroyer, John Sloan, Adam J. Smith, Kurtwood Smith, Peter James Smith, Devon Sorvari, Paul Stanko, Janellen Steininger, Joanna Strapp, Susan Sullivan, James Sutorius, Elizabeth Swain, Joel Swetow, Kitty Swink, Jeanne Syquia, Reba Thomas, R. Scott Thompson, Danielle Thorpe, Brian Tichnell, Jeff Torres, Jocelyn Towne, Rebekah Tripp, Marcelo Tubert, Peter Van Norden, Tim Venable, Geoffrey Wade, Todd Waring, Patrick Wenk-Wolff, Laura Wernette, Amelia White, Karen Malina White, Abby Wilde, Jules Willcox, Paul Willson, Alicia Wollerton, Zoe Yale, Kelvin Yu, Buck Zachary, Josh Zuckerman

TITANS

Specially designated company members who have contributed above and beyond!

John Achorn, John Apicella, Fran Bennett, Ralph Drischell, Robert Goldsby, Gregory Itzin, Dakin Matthews, Anne McNaughton, Rob Nagle, Angela Paton, John Sloan, Kitty Swink