

A man and a woman are sitting on a lush green lawn in a garden. The woman, on the left, is wearing a light yellow, long-sleeved dress with a ruffled collar and is holding a small yellow flower. The man, on the right, is wearing a light blue and white striped shirt and dark trousers. They are both looking at each other and smiling. The garden is filled with various flowers, including purple and pink ones. In the background, there are green trees and a blue sky with white clouds.

THE IMPORTANCE OF BEING EARNEST

BY OSCAR WILDE
DIRECTED BY
GIGI BERMINGHAM

OCT 13 - NOV 18, 2024

ANTAEUS
Theatre Company

Antaeus Leadership Note



Photo by Frank Ishman

Welcome to the first show of our 2024/25 Season! All of us at Antaeus are so grateful for your continued support. Thanks to you, we get to bring amazing stories to life, celebrate our talented artists, and continue building a vibrant theater community in Los Angeles, all while showcasing the timeless classics that define our work.

We're guessing you find yourself returning to the classics, whether through favorite books, movies, family stories, or attending live theater. Classics are our foundation, they show us where we've been, light the way to the future or sound a bell of warning about where we're headed. They work in two directions by reminding us of how alike we are, and encouraging us to celebrate our differences. All of the plays this season represent what classics do best.

Three of our own company members will direct this year: Gigi Bermingham with *The Importance of Being Earnest*, Armin Shimerman with *Twelfth Night*, and Carolyn Ratteray with *The Glass Menagerie*. Having company members in the director's chair means these productions are shaped by artists who deeply understand and are personally invested in our company's mission and values. It's a unique opportunity to see classic plays brought to life with fresh, insider perspectives. And we hope you can see them all, because you may notice a theme: each of these plays considers outsiders who want to belong, but belong on their own terms. (We might even say that they want their differences celebrated)!

We also want to take a moment to thank our former Artistic Director, Bill Brochtrup, who stepped down at the end of last season. Bill's leadership and vision have played a huge role in shaping Antaeus into the vibrant, respected company we are today. We're deeply grateful for his dedication and ongoing support as a company member, donor, and audience member.

Thank you for being such an important part of our journey and for supporting everything we do here at Antaeus. Theater can only happen when you are here with us - your presence completes our work. We hope you enjoy Oscar Wilde's *The Importance of Being Earnest*.

Best,

Nike Doukas
Artistic Director

Ana Rose O'Halloran
Producing Executive Director

Antaeus Theatre Company Presents

The Importance of Being Earnest

By Oscar Wilde
Directed by Gigi Bermingham

Scenic Designer	Costume Designer
Angela Balogh Calin**	Julie Keen**
Lighting Designer	Sound Designer
Ken Booth	Salvador C Zamora
Properties Designer	Intimacy Director
John McElveney	Jen Albert
Dialect Coach	Production Stage Manager
Paul Wagar	Talya Camras
Production Dramaturg	Assistant Stage Manager
Rachel Berney Needleman	Casey Collaso

PRODUCTION GENEROUSLY SPONSORED IN PART BY
The David Lee Foundation

Ensemble

Alex Barlas, Anne Gee Byrd*, Julia Fletcher*, Bo Foxworth*,
Jay Lee, Alessandra Mañón*, Jules Willcox*, Michael Yapujian*



**Member, Actors' Equity Association,
the union of professional Actors and
Stage Managers in the United States.
This production is presented under
the auspices of the Actors' Equity Los
Angeles Membership Company Rule.*



The Designers at this Theatre **
are Represented by
United Scenic Artists Local USA 829
of the International Alliance of Theatrical Stage Employees

The video and/or audio recording of this performance by any means whatsoever is strictly prohibited.

Director's Note

Oscar Wilde was born in Ireland to intellectual parents, attended Trinity College and Oxford, wrote melodramas and novels (*The Picture of Dorian Gray*), and eventually became a renowned and sought-after playwright in London in the early 1890s, adored for his witty epigrams.

Wilde said that *The Importance of Being Earnest* “has its philosophy... That we should treat all the trivial things of life very seriously, and all the serious things of life with sincere and studied triviality.” This philosophy does indeed appear to govern the behavior of the characters in the play. However within the charming rhetorical froth lies Wilde’s blistering indictment of this inversion of values that he encountered in the elite community he infiltrated and which lifted him to great heights of popularity.

When he was accused of homosexuality, the noblesse abandoned him in an instant. He served two years in prison for “gross indecency” and died an impoverished outcast.

Like Wilde, the characters in the play are being suffocated by social edicts; none are able to live authentically.

What interests me is exploring who they truly are - their humanity - and uncovering what could motivate them to make dubious choices. We can maintain a safe distance from them and laugh at their foibles, or we can try to understand what has forced them to hide their true selves behind a social mask.

Are they worth caring about? I think so.

Thank you for joining us. Please don't eat all the muffins.

Gigi Bermingham, Director *The Importance of Being Earnest*

The Importance of Being Earnest

Cast of Characters

JOHN WORTHING, J.P. Alex Barlas

LADY BRACKNELL Anne Gee Byrd

MISS PRISM, GOVERNESS Julia Fletcher

REV. CANON CHASUBLE, D.D. Bo Foxworth

ALGERNON MONCRIEFF Jay Lee

CECILY CARDEW Alessandra Mañón

HON. GWENDOLEN FAIRFAX Jules Willcox

LANE / MERRIMAN Michael Yapujian

Special Thanks from the Director

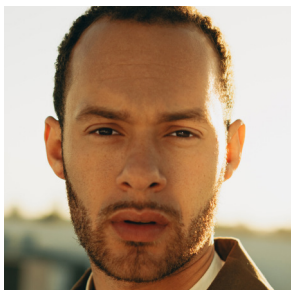
Lisa Coto, LAOpera

Fred Kinney, Department of Theatre & Dance CSU Fullerton

Land Acknowledgement

Antaeus Theatre Company acknowledges the Gabrielino-Tongva peoples as the traditional caretakers of the land in the Los Angeles basin where Antaeus is located. We pay our respect to the Ancestors, Elders, and Relations – past, present, and emerging.

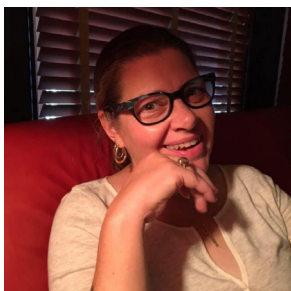
ENSEMBLE - *THE IMPORTANCE OF BEING EARNEST*



Alex Barlas



Anne Gee Byrd



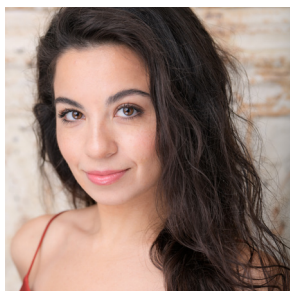
Julia Fletcher



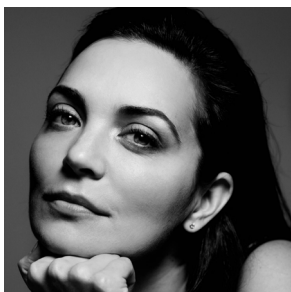
Bo Foxworth



Jay Lee



Alessandra Mañón



Jules Willcox



Michael Yapujian

CAST

ALEX BARLAS (JOHN WORTHING, J.P.):

Alex embarked on a transformative journey toward his artistic aspirations, earning an M.F.A. in Acting from California Institute of the Arts in 2020. He has illuminated renowned venues, notably portraying the complex character Oswald Alving in *Ghosts* at The Odyssey Theater. He captured audiences' hearts as Sunny, a visual artist grappling with self-doubt, in Edgar Arceneaux's *Boney Manilli*, staged at the iconic Walt Disney Concert Hall's REDCAT Theater. Most recently, Alex delighted audiences with his performance in *A Christmas Carol* at South Coast Repertory, showcasing his dedication to bringing stories to life. He is currently in residence at The Reef, developing his one-man show, *Take Me Home Country Road*. Alex is honored to be a part of ANTAEUS's production of *The Importance of Being Earnest*.

ANNE GEE BYRD (LADY BRACKNELL):

At ANTAEUS: *Love and Information*, *Everybody*, *The Cripple of Inishmaan*, and many others. Anne Gee has performed locally at The Mark Taper Forum, Kirk Douglas, Geffen Playhouse, Pasadena Playhouse, La Mirada, and the Ensemble in Santa Barbara, as well as across the country including A.C.T. in San Francisco, American Shakespeare Festival in Connecticut, Cincinnati Playhouse in the Park, The Great Lakes Theater Festival, Indiana Repertory, The La Jolla Playhouse, The McCarter Theatre, The Old Globe in San Diego, Seattle Repertory, and South Coast Repertory. She is a staunch member of ANTAEUS. She has received five Drama Critics Circle Awards and numerous Ovation

nominations. Recent TV credits include: *911*, *CSI: Los Angeles*, *How to Get Away with Murder*, *The Colony*, *Shameless*, *Murder in the First*, *Rake*, and *Lucky Hank*.

JULIA FLETCHER (MISS PRISM, GOVERNESS):

At ANTAEUS: *Measure for Measure*, *The Cripple of Inishmaan*, *Cat on a Hot Tin Roof*, *You Can't Take It With You*, *The Liar*, *The Zip Code Plays: Los Angeles - 90028: Hollywood & 91352: Sun Valley Salvage*. ClassicsFests: *The Hot L Baltimore*, *Arsenic & Old Lace*, *St. Joan*, *Women Beware Women*, *Hindle Wakes*, *Tennessee Williams One-Acts*, *Ah, Wilderness!* Other Theaters: American Conservatory Theatre, Old Globe, Intiman, San Jose Rep, ACT/Seattle, P.C.P.A., Pittsburgh Public Theatre, Padua Playwrights, PRT. Founding Artistic Director - Pacific Resident Theatre.

BO FOXWORTH (REV. CANON CHASUBLE, D.D.):

At ANTAEUS: *Measure for Measure*, *Cloud 9* (LADCC and Stage Raw Best Actor Winner), *Henry IV: Part One*, *The Liar*, *The Crucible* (Ovation nomination), the title role in *Macbeth*, *The Seagull* and *The Malcontent*. Other Theaters include: North Coast Rep, The Skylight Theatre, South Coast Repertory, Ensemble Theater Company, La Mirada, Laguna Playhouse, The Geffen, Disney Hall, LATheatreWorks, Boston Court Pasadena, The Hollywood Bowl and A Noise Within where he received two Ovation nominations. New York and Regional Theater includes: The Lucile Lortel, The Pearl Theatre, The Long Wharf, Yale Rep, The Shakespeare Theatre, Viennas English Theatre, Baltimore Center Stage, The Old Globe and many others. He has numerous Film

and Television credits including: *Modern Family*, *VEEP* and the HBO movie *All The Way* starring Bryan Cranston. He is a graduate of UCLA and received his Masters at Yale School of Drama. Follow on IG @BoFoxworth

JAY LEE (ALGERNON MONCRIEFF):

At ANTAEUS: *Three Days in the Country*. Other Local Theaters: A Noise Within, Shakespeare OC, Coeurage Theatre Company. TV series regular: *CSI: Vegas*, *Looking for Alaska*. TV recurring: *American Vandal*. For Michael Keenan. playfullee.com

ALESSANDRA MAÑÓN (CECILY CARDEW):

Alessandra is thrilled to be making her debut with ANTAEUS! She is an LA-based actor that works in theater, Film, and TV. Alessandra has previously performed with Kingsmen Shakespeare Co, South Pasadena Theatre Workshop, Sacred Fools, Orange County Shakespeare, Austin Shakespeare, and ZACH Theatre. Her Film & TV credits include: *Rich Kids*, *Vida*, *Queen of the South*, *Crazy Ex Girlfriend*, *Walker*, and *Murder Made Me Famous*. Off stage and screen Alessandra studies Argentine Tango at the Los Angeles Tango Academy and can be found rock climbing at The Stronghold Climbing Gym.

JULES WILLCOX (HON. GWENDOLEN FAIRFAX):

At ANTAEUS: *The Seagull*, *The Malcontent* and *The Liar*. Other Theaters: *Kings* (South Coast Repertory); *Gruesome Playground Injuries* (Rogue Machine Theatre); *The Power of Duff* (The Geffen Playhouse); *A or B* (The Garry Marshall Theatre); *Macbeth*, *Pericles*, *Eurydice*, and *The Doctor's Dilemma* (A Noise Within); *The Time of Your Life*

and *Becky's New Car* (Pacific Resident Theatre); *Hippolytus* (The Getty Villa); *Displacement* (Pasadena Playhouse - Hothouse); *The Contest* (Edinburgh Fringe Festival); and *A Midsummer Night's Dream*, *Fashion*, and *Othello* (Theatricum Botanicum). Film: *Alone*, *DreamKatcher*, *On the Rocks*, *Under the Silver Lake*, and *Dependent's Day*. TV: *The Night Agent*, *Bloodline*, *Chicago PD*, *Servant*, *FBI Most Wanted*, *The L Word Generation Q*, *Quantum Leap*, *Dirty John*, *CSI: New York*, and *Teen Wolf*. IG: @julesfrank

MICHAEL YAPUJIAN (LANE/ MERRIMAN):

At ANTAEUS: Debut! Other Local Theaters: A Noise Within, The Odyssey, The Second City. TV: *Hacks*. michaelyapujan.com

PRODUCTION

GIGI BERMINGHAM (DIRECTOR):

At ANTAEUS: Directed *You Can't Take It With You*; acted in *Native Son*, *Picnic*, *Cloud 9*, *The Seagull*, *Mother Courage*, *Pera Palas*, and others. Local Theater: Pasadena Playhouse, The Old Globe, La Mirada, ICT Long Beach, Kirk Douglas Theatre, Ensemble Theatre Co, Rubicon, MainStreet, Boston Court Pasadena. Film: *Black Panther: Wakanda Forever*, *Amsterdam*, *Alex and Emma*, *The Out-Laws*, *Incarcerated*. TV: Recurring on *Clipped*, *Loot*, *Platonic*, *Chicago Fire*, *Jane the Virgin*; Guest roles on *9-1-1 Lone Star*, *Death and Other Details*, *Terminal List*, *S.W.A.T.*, *NCIS: L.A.*, *American Horror Story*, etc. Gigi coaches actors and is a career mentor. gigibermingham.com

OSCAR WILDE (PLAYWRIGHT):

Oscar Wilde was an Irish playwright, poet, and author, renowned for his sharp wit, flamboyant style, and keen social commentary. Born in Dublin, Wilde became one of the most prominent figures of the late Victorian era. He excelled at writing comedies of manners, with his most famous play, *The Importance of Being Earnest* (1895), being a perfect example of his talent for satire and wordplay. Wilde's other notable works include *An Ideal Husband*, *Lady Windermere's Fan*, and the novel *The Picture of Dorian Gray*. His life, marked by both extraordinary success and scandalous downfall, has become as legendary as his writings. Wilde was imprisoned for "gross indecency" due to his homosexuality, which led to his tragic early death at the age of 46. Despite his short life, Wilde's work continues to be celebrated for its enduring wit and insight

into human nature.

NIKE DOUKAS (ARTISTIC DIRECTOR):

At ANTAEUS (Directing): *The Tempest*, *The Hothouse*; (Acting): *The Zip Code Plays*, *Three Days in the Country*, *Hedda Gabler*, *Cousin Bette*, *Tonight at 8:30*, *The Liar*, *Patience*, *The Wood Demon*. Other directing credits: Ensemble Theatre Company, A Noise Within, The Jewel Theatre, North Coast Repertory, Playwright's Arena, PICT (Pittsburgh). Other acting credits: South Coast Repertory, Pasadena Playhouse, The Ensemble Theatre Company, PICT, Kinetic Theatre Company, ACT (Seattle), Shakespeare Festival LA, The Old Globe, The Mark Taper Forum, Shakespeare Santa Cruz, Berkeley Repertory Theatre, The American Conservatory Theatre. TV: Recurring roles on the new *Frasier* and *Desperate Housewives*, and guest stars on *NCIS* and many others. M.F.A., The American Conservatory Theatre.

ANA ROSE O'HALLORAN (PRODUCING EXECUTIVE DIRECTOR):

Ana Rose joined ANTAEUS in 2015 and has produced over 20 productions during her tenure. Previously, she served as the Senior Director at The Pablove Foundation, and in various roles in the development department at Center Theatre Group. She received her M.F.A. in Theatre Management from California State University, Long Beach, and a B.F.A. in Theatre Management and a B.F.A. in Performance from Ohio University.

**ANGELA BALOGH CALIN
(SCENIC DESIGNER):** At ANTAEUS: *The Tempest*, *Love and Information*, *The Caucasian Chalk Circle*, *The Liar*.

Angela is a costume and set designer with over 120 productions in local and regional theaters. Credits include: *Tango* (Romanian National Theatre), *Shakespeare in Love* (Alliance Theatre, Orlando Shakespeare); *Mamma Mia!* (Hollywood Bowl); *In The Upper Room*, *Two Degrees* (Denver Center Theatre Company); *Outside Mullingar*, *Monster Builder* (South Coast Repertory); *Into the Breeches* (Cleveland Playhouse, Asolo Theatre); *Sense and Sensibility* (Milwaukee Rep); and *Misalliance* and *Animal Farm* (A Noise Within, resident artist). Her work has been seen at The Old Globe, Pasadena Playhouse, Georgia Shakespeare, and various other theaters in Los Angeles. Angela's designs garnered numerous awards and recognitions from L.A Drama Critics Circle, Ovation Awards, Backstage, and Drama-Logue Awards. Angela has 16 film production credits in the US and her native Romania and she holds an M.F.A. in set and costume design from the Academy of Arts "N. Grigorescu" in Bucharest - Romania.

JULIE KEEN (COSTUME DESIGNER):

Julie is excited to be designing the costumes for *The Importance of Being Earnest* and working for the first time with Director Gigi Bermingham. This will be her third collaboration with the artists of ANTAEUS, preceded by *The Tempest* and *The Hothouse*. Her design credits elsewhere include work at South Coast Repertory, A Noise Within, Laguna Playhouse and the Rubicon Theatre and collaborations with director Nike Doukas including *King Lear* for The Harold Clurman Laboratory Theater Company and *All's Well That Ends Well* for USC School of Drama. She is dedicating her

work on this show to the many generous, gifted and big hearted artists that have mentored her over the years, who are no longer with us here in this world. Peace and Love.

KEN BOOTH (LIGHTING DESIGNER):

Ken is happy to return to ANTAEUS following the production of Brecht's *The Caucasian Chalk Circle*, directed by Stephanie Shroyer. Recent productions include *Metamorphoses*, *Animal Farm*, *Sweeney Todd: The Demon Barber of Fleet Street*, *Misalliance*, *A Midsummer Night's Dream*, and *The Skin of Our Teeth* at A Noise Within. Other Theaters: The Fountain Theater, Pacific Resident Theater Ensemble, EST/LA. He is an alumni of UCLA.

SALVADOR C ZAMORA (SOUND DESIGNER):

At ANTAEUS: *Everybody*. Select designer credits: *Primary Trust* (Barrington Stage Company); *The Grown Ups* (Baby Teeth LA); *tick, tick... Boom!* (Cygnet Theatre); *The Fires* (Soho Rep.); *TaxilandiaSD* (La Jolla Playhouse); *Bunny Bunny*, *Hells Canyon* (UCSD). Select assistant credits: *Here There Are Blueberries* ((National Tour), *Derecho*, *Babbitt*, *Sumo* (La Jolla Playhouse). Website: suavecito.design

JOHN MCELVENY (PROPERTIES DESIGNER):

John was an Equity Stage Manager and Lighting Designer for many years before joining ABC Television as a Unit/Production Manager. While there he worked many sitcoms, specials and awards shows. He has served as Production Manager for The Emmys and was Senior Production Manager for many Academy Awards presentations. He and the group called MacAndME designed

properties for over 50 productions at the Colony Theatre in Burbank and other venues in the Los Angeles area. At the Falcon/Garry Marshall Theatre he has designed over 14 productions plus several at the Sierra Madre Playhouse and Main Street Theatre Co. in Rancho Cucamonga. Other theaters include A Noise Within in Pasadena and 14 productions at The Ensemble Theatre Company in Santa Barbara. Most recently at Theatre 40 in Beverly Hills. He is past President of the Pasadena Playhouse Alumni and Associates.

JEN ALBERT (INTIMACY DIRECTOR):

Jen is an Intimacy Director and an award-winning Fight Choreographer whose work can be seen all over Los Angeles stages and in Film and TV. She is a recipient of the LA Stage Alliance Ovation Award for Best Fight Direction, as well as the recipient of the LA Drama Critics Circle award for best Fight Choreography. She is an emeritus company member of Babes with Blades, Chicago's first all-female stage combat theatre company. She also teaches stage combat and is the resident Fight Choreographer and Intimacy Director at Art of Acting Studio Conservatory. She is working as the Intimacy Coordinator for a new series shooting in LA and premiering later this year. Jen is excited to be working with the folks at ANTAEUS.

PAUL WAGAR (DIALECT COACH):

At ANTAEUS: *The Autumn Garden*. At The Geffen Playhouse: *The Inheritance (Parts 1 & 2)*, *The Engagement Party*, *A Wicked Soul in Cherry Hill*, *Mysterious Circumstances*, *Black Super Hero Magic Mama*, *Ironbound*, *The Model Apartment*, *Barbecue*, *These Paper Bullets*, *The Night*

Alive, *Miss Julie*, *American Buffalo*, *By The Way Meet Vera Stark*, *The God of Hell*, *Cat on a Hot Tin Roof*, *The Weir*, etc; Other Theater: *Steel Magnolias* (L.A. Theatre Works); *Rules of Seconds* (The Los Angeles Theatre Center); *Red Barn* (Independent Shakespeare Company); and *Hymn* (Lower Depth Theater). FILM & TV: *Cruel Intentions*; *Perry Mason (Season 2)*; *Love and Death*; *Heroes Journey*; *Cold Comes the Night*; *Blade Runner 2049*; *Next Friday*; *Money Talks*. Adjunct Theater Professor, UCLA.

TALYA CAMRAS (PRODUCTION

STAGE MANAGER): At ANTAEUS: *Nora*, *The Tempest*, *Measure for Measure*, *The Abuelas*. Elsewhere: *A Midsummer Night's Dream* (A Noise Within), *Ragtime*, *The Sound of Music* (5-Star Theatricals), *RENT* (Coeurage Ensemble), *The Merry Wives of Windsor*, *Richard II* (Kingsmen Shakespeare Company), *Mamma Mia!*, *Rock of Ages*, *SpongeBob The Musical*, *Romeo and Juliet*, *You're A Good Man, Charlie Brown* (Milken), *Uncovered*, *Family Matters*, *The Rest is History*, *True Colors* (The Braid), *A Midsummer Night's Dream* (Theatricum Botanicum). Talya is thrilled to be a part of this amazing team!

RACHEL BERNEY NEEDLEMAN

(PRODUCTION DRAMATURG):

At ANTAEUS: *Diana of Dobson's*, *Cloud 9*, *Henry IV*, *As You Like It* (Asst. Dir), *Wedding Band* (Asst. Dir), *The Liar* (Asst. Dir). Elsewhere: *At Wit's End* (Arizona Theatre Co.) As a director: *Mira and the Whale* by Jacob Surovsky (EST/LA DevLab), Theresa Rebeck's *What We're Up Against* (Pacific Resident Theatre Co-op), *Cabaret Noel* with Gigi Bermingham (ANTAEUS and Skylight Theatre), *Five Second Chances* by

Mattie Brickman (PRT Co-op), *Cowgirls* by Mildred Lewis (EST/LA), *The Space Between* (The Braid), *Whitesville* and other audio plays (Open Door Playhouse podcast). Rachel is a member of Playground-LA playwright incubator and has directed new play readings and workshops at The Blank, EST/LA, Skylight and Theatricum Botanicum. She is a co-author of the LA Anti-Racist Theatre Standards.

ADAM MEYER (TECHNICAL

DIRECTOR): Adam has been hanging around the ANTAEUS buildings since 2004. He took over as Production Manager in 2011 and oversaw every production prior to his departure in 2022. Now, he's BACK! Adam is also a company member and has acted in numerous plays and readings at ANTAEUS. He credits a lot of his success to this warm and loving theater company. But he would be nothing without the support and love from his family, wife Rebecca, and two sons, Leo and Golden.

CASEY COLLASO (ASSISTANT STAGE

MANAGER): At ANTAEUS: *Nora*, *The Winter's Tale* (Assistant Stage Manager), and Audience and Donor Relations Intern in 2022. She earned her B.A. in Theatre Arts with an emphasis in Directing at California State University, Fullerton. Other credits include: *A Midsummer Night's Dream* (Assistant Director), *Policarpa: Apocalypse Sur Amerikka* (Assistant Director), *Within Reach* (Assistant Stage Manager). Casey is delighted to join another ANTAEUS production. She would like to thank her friends and family for their continuous support.



Post show discussion with the artists of *The Winter's Tale* (2024) after the student matinee.

At Antaeus, we believe that art is an essential component of a well-lived life. Besides our productions, here are some of the other programs that help us achieve our mission:

ARTS EDUCATION

Antaeus offers free student matinees to Glendale Unified School District students, complete with classroom visits, study guides, and Q&A sessions with our artists. For many students, this is their first live theater experience. This season, we will offer six free student matinees throughout our 2024/25 Season, including two during *The Importance of Being Earnest*.

ANTAEUS ACADEMY

Our Academy explores classics through weekly acting classes and Masterclasses, for actors and audience members alike. This season, we are continuing to expand the Antaeus Academy with more exciting offerings for classics enthusiasts.

NEXT COMMISSIONS

Our NEXT Commissions enhance LA's artistic community by supporting playwrights as they develop new works based on classic plays. This year, we are partnering with two incredible storytellers, Diana Burbano and Khari Wyatt, as they craft new plays for the American theatrical canon.

THE ANTAEUS LIBRARY PROJECT

Through a partnership with the Glendale Central Library, our collection of over 7,500 plays and theater texts will be made available to the public. Local residents and students will be able to explore our collection, providing them with greater access to theatrical literature and engaging our community in the rich, global tradition of theater.



Peter James Smith, Jocelyn Towne, and Brian Tichnell in *Nora* (2024), Photo by Jenny Graham

Support Antaeus Today!

As a nonprofit, we rely on the generosity of supporters for most of our income. Every production on our stage, every student we serve in our arts education programs, and every job we create is thanks to this community.

With your support we are able to:

- Produce Award-Winning Productions
- Create Paying Jobs for Artists
- Offer Arts Education Programs
- Provide Accessible Tickets to the Local Community

Ways to Support Antaeus

Sustaining Support - If every member of the Antaeus community gave \$10 a month, our costs would be covered.

Stock - Initiate a gift of stock.

Donor Advised Fund - Recommend a grant directly from your DAF.

Employer Matching Gift - Double your impact! Ask your employer about making a matching gift.

IRA - Are you 70 1/2 or older? Consider a direct transfer to Antaeus.

Bequest - Secure the future of Antaeus with a legacy gift.

Join our community as a donor today. To give, stop by the box office, visit antaeus.org, call us at 818.506.5436, or mail your gift to Antaeus Theatre Company, 110 East Broadway, Glendale, CA 91205.

For questions, contact Senior Associate, Sophie Bell Meincke, at sophie@antaeus.org or 818.506.5436.

Thank You to our Extended Family
of Loyal Supporters

CORPORATE SPONSORSHIP

Join other business leaders by supporting Antaeus Theatre Company's award-winning programming through sponsorship and matching gift programs.

Corporate Sponsors

Comcast NBC Universal

The Kroger Co. Foundation

Pasadena International Film Festival

Paul Hastings LLP

So Smitten Events

The Walt Disney Company Foundation

*Based on donations made between 8/15/23-8/12/24
+ Indicates monthly sustaining donor*

PRODUCER'S CIRCLE

The Producer's Circle ensures we are never limited in our artistic pursuits on our stage. This group believes in sustained excellence and allows Antaeus to produce plays no matter the cast size or production needs.

\$50,000+

Kiki Ramos & David Gindler
Los Angeles County Department of Arts and Culture
Perenchio Foundation
In Honor of Channing Chase with support from Daniel Saxon

\$25,000+

The Ahmanson Foundation
The Michael J. Connell Foundation
The David Lee Foundation
The Ralph M. Parsons Foundation
The Shubert Foundation

\$15,000+

Sonja Berggren & Patrick Seaver
Rosemary A. Hernandez
National Endowment for the Arts
Reba Waters Thomas
Jocelyn Towne & Simon Helberg
Mary Jo & David Volk

*Based on donations made between 8/15/23-9/15/24
+ Indicates monthly sustaining donor*

DIRECTOR'S CIRCLE

The Director's Circle is a distinguished group of theater lovers who provide general operating support to Antaeus. In recognition of this support, they receive invitations to special events with Antaeus' artists.

\$10,000+

Daniel Blinkoff & Tamlyn Tomita
The Green Foundation
Scott Fraser & Cathy Jurca
Remembering Melinda Peterson - Charles Moed
Suzy Moser
Debra Thompson & Lawrence Riff
Jack & Belinda Walker
April Webster

\$5,000+

Bill Brochtrup
Community Foundation of the Verdugos
Evie & John DiCiaccio
Dawn Didawick & Harry Groener+
Ruth Eliel & Bill Cooney
Glendale Educational Foundation
Matthew Goldsby
J Robin Groves+
Al Latham & Elaine Kramer
Mary Lambert
Molly Munger & Steve English
Anthony J. Oncidi
The Proctor/Peterson Trust+
Amy Proctor & Lloyd Roberson II+
Dan Putman
Jennifer & Matthew Rowland
Jaye Scholl & Charlie Bohlen+
Laura A. Seigle
Joan Pirkle Smith & Kurtwood Smith

DIRECTOR'S CIRCLE

The Director's Circle is a distinguished group of theater lovers who provide general operating support to Antaeus. In recognition of this support, they receive invitations to special events with Antaeus' artists.

\$2,500+

Gigi Bermingham
Emily Chase & David Decker+
Bruce & Valerie Merritt
Michael Morrell
Richard Nathan+
Cara Robertson
Tony Shaloub & Brooke Adams
R. Scott Thompson
Wendy & Peter Van Norden
Arlene Vidor
Steven Warheit & Jean Christensen
Karen Malina White
Willow Cabin Productions

\$1,500+

Amy Aquino & Drew McCoy
Anne Gee Byrd
JD Cullum
Loraine Despres & Carleton Eastlake
Jeanie Fiskin
Nancy Hancock Griffith
Paul M Holmes+
Kahn Education Foundation
Susan & Bob Long
Ana Rose & Grant O'Halloran+
Michael R. Oppenheim
Gwynne & Robert Pine+
John S. Schwartz
Amelia White & Geoffrey Wade
Patty Woo & Steve Poretzky

STAGE CREW

The Stage Crew community of donors support the production of great plays,
innovative arts education outreach, and the training of the next generation of actors.

\$1,000+

Deborah & Andrew Bogen	Dan Oliverio+
Caplin Foundation	Clarissa Park
Debra Danner	Deborah E. Reed
Sharon & Rick Ellingsen	Kathy Baker & Steve Robman
Anonymous	Ronus Foundation
Patricia & Richard Hughes	G Scott Halloran & Peter J. Rusch
Jack & Maureen Kolosky	In Honor of Dakin Matthews
Robert Leventer & Jenna Blaustein	Larry Title & Ellen Shavelson
Dakin Matthews & Anne McNaughton	The Sheri and Les Biller Family Foundation
Carol Bahoric & Myron Meisel	

\$500+

Robert C. Anderson	Mark & Janice Kaspersen
Joni & Miles Benickes	Denise & David Kautter
Eileen Boyd	Bill & Priscilla Kennedy
Anonymous	Elaine Lockhart-Mummery
Daniel Castellaneta & Deborah Lacusta	From the Family of Melinda Peterson
Stephanie & Dennis Cohen	Ned Schmidtke
Andrew R. DeMar Family Foundation	George & Carolyn Seitz
Kathleen & James Drummy	Liza Seneca+
Barbara Durham+	Armin Shimerman & Kitty Swink
Paul Eiding+	Adam J. Smith
Drs. Marjorie Marks Fond &	Elizabeth Swain
Richard Z. Fond	Kitty Swink & Armin Shimerman
Dr. Jerome Hunt & Alvin Ford Jr.	Drs. Ligia & William Toutant
Leslie & Robert Gordon+	Juliet Landau and Deverill Weekes
Anonymous	Patty Woo & Steven Poretzky
Anthony & Alizon Harris	Richard Yaffe
Melanie L Hayes+	

\$100+

Adele Abrams	Heather Allyn & Rob Nagle+	Mary & Perry Bankston
John Achorn	Tony Amendola	Michael Barker &
Emily Kuroda & Alberto Isaac	Polly & Jamie Anderson	Heidi Hanson+
Rhonda Aldrich &	Joan Borgman & John Apicella	Ron, Elayne, Krysten Bittner
Stephen Halbert+	Annet Arakelian	and Chris Ruiz
Kathleen Ross-Allee &	Pier Charlene Avirom &	Amy Borgman/Michael Fiorillo
John Allee	David Avirom	Christine Avila & Mark Bramhall

*Based on donations made between 8/1/23-9/14/24
+ Indicates monthly sustaining donor*

Bruce & Susan Brower	Sheila & Milton Hyman	Bianca & Lance Rucker
Marie Pal-Brown &	Foundation	Christine Sanders
Garrett M Brown	Joshua Ireland	John Schuning &
In Memory of Melinda	Freya & Mark Ivener	Gregory Ross+
Peterson	Tom Jacobson &	Ruth & David Seigle
Elisa & Eric Callow	Ramone Muñoz	Steven Seliger
Chancy Memorial Foundation	Andrew F. Johnson	Nayan Shah & Ken Foster
Karen Chiella+	Peter & Dixie Johnson	Cordelia & Sidney Sherland
Jacqueline Chooljian	Alice & Sam Johnston+	Stephanie Shroyer
Karen Constine	Ann Jopling	Arnold Siegel &
Jake & Leslie Crabtree	Kamran Izadpanah	Susan Futterman
Sondra Currie & Alan J. Levi	Marshall F. Kramer	John & Juliana Sloan+
Anonymous	Bonnie & Jim Lambert	Margaret & David Sloan
Diana Daves &	Lanzafame Family Trust+	Peter James Smith
John McLaughlin	Aaron Lyons+	Christopher John Smith
Martha Demson	Victor & Anna Luke	Steven & Devon Brand
Bronwen Denton-Davis	Joseph MacDonald	Lawrence Sparks
Emily Deschanel	Robert Machray	Zane Stanley
Pete & Julie Gutman Dickinson	Fred Manaster	Nadya Starr
Nike Doukas & Leo Marks	Abigail Marks+	Janellen Steininger+
Sheldon Epps	Anna Mathias	James Sutorius
Nicole Erb+	Patricia Mayer	Elizabeth & Steven Swink
Anonymous	Tulis McCall	Eileen T'Kaye & David Bischoff
Jeanette & Warren Harkins	Philip McKinley	Reba Thomas+
In Memory of Melinda	Mike McShane+	Lori & Marcelo Tubert
Peterson	In honor of Jack and	Dale E. Turner
James Freed	Belinda Walker and Family	Jill Maglione
Rob Friedman	David Barkowitz	Jill Maglione & Paul Van Dorpe
Barbara & Frederick Gable	The Millikans	Connie & Ivan Vance
Dr. Jeffrey Gale &	Elyse Mirto+	E. J. von Schoff
Ms. Julane Marx	Kerry Mohnike+	Patrick Wenk-Wolff
Olga Garay-English+	In Memory of Melinda	Anonymous
Kevin Goetz	Peterson	Stanley & Laurie Whitcomb
Eve Gordon & Todd Waring+	Heather Allyn & Rob Nagle+	Paul Willson
Susan Gosden	Arianne Neumark	Alicia Wollerton+
Gretchen & Richard Grant	Allen Newcomb	Anonymous
Allen Grogan	Anonymous	In Memory of Melinda
William & Bernhild Heckmann	In Memory of Melinda	Peterson
Gustavo Herrera &	Peterson	
Cristina Ramirez	Anonymous	
Beverly Higginson	Christina Pickles	
Katie Hotchkiss+	Deb Podus	
Marty & Merrilee Howard	Patricia Poet	
Carol Howell	Anna Quirino-Miranda	
Rosemary Huang+	Anonymous	
Kevin Hudnell	Richard Reinhart	

*Based on donations made between 8/1/23-9/14/24
+ Indicates monthly sustaining donor*

STAFF

PRODUCING EXECUTIVE DIRECTOR

Ana Rose O'Halloran

ARTISTIC DIRECTOR

Nike Doukas

EXECUTIVE ASSISTANT

Courtney Agustin

TECHNICAL DIRECTOR

Adam Meyer

SENIOR ASSOCIATE,
PHILANTHROPY & COMMUNICATIONS

Sophie Bell Meincke

BOOKKEEPER

Amy Michner

OPERATIONS MANAGER

Kristin Weber

BOARD OF DIRECTORS

Kiki Ramos Gindler, Chair

Laura Seigle, Treasurer

Debra Thompson, Secretary

Sunita Deshmukh

Evie DiCiaccio

Dawn Didawick

Nike Doukas

Ana Rose O'Halloran

Judy Louise Johnson

Jay Lee

Clarissa Park

Jennifer Rowland

Reba Thomas

Arlene Vidor

David Volk

Jack Walker

April Webster

BOARD EMERITUS

Bob Craft

David Gindler

Mary Lambert

PRODUCTION & FRONT OF HOUSE

MASTER ELECTRICIAN

Ryan Dempsey

STITCHER

Pauline Good

ELECTRICIANS

Sam Campbell, Iliana Cusack-Mercedez,

Jennifer Gonzalez, Kevin Orellana,

Stephanie Sandler, Kim Williams

COSTUME ASSISTANT

Casey Collaso

ARTWORK

Frank Ishman

CARPENTERS

Nic Dagraca, Adam Meyer

PATRON EXPERIENCE ASSOCIATES

Kaite Brandt, Farrah Gharibian, Emily Kellis,

Spencer Marchewka, Jessaica Shields,

Max Tel, Niek Versteeg

LEAD SCENIC PAINTER

Orlando de la Paz

SCENIC PAINTERS

Ian Hamilton, Marygold Martinez

COMPANY MEMBERS

John Achorn, Bernard K. Addison, Rhonda Aldrich, John Allee, Heather Allyn, Tony Amendola, John Apicella, Ben Atkinson, Tessa Auberjonois, Paul Baird, Gigi Bermingham, Daniel Bess, Daniel Blinkoff, John Bobek, Andrew Borba, Chad Borden, Christopher Breyer, Bill Brochtrup, Anne Gee Byrd, Nick Cagle, Jane Carr, Jon Chaffin, Emily Chase, Kendra Chell, Shannon Lee Clair, Josh Clark, Avery Clyde, Barry Creyton, JD Cullum, Paul Culos, Nicholas D'Agosto, Gregg T. Daniel, Julia Davis, Jason Delane Lee, Ramón de Ocampo, John DeMita, David DeSantos, Seamus Dever, Etta Devine, Gabriel Diani, Dawn Didawick, Francia DiMase, Mark Doerr, Daniel Dorr, Nike Doukas, Sarah Drew, Cherish Monique Duke, Paul Eiding, Nicole Erb, Terry Evans, Scott Ferrara, James Ferrero, Martin Ferrero, Karianne Flaathen, Julia Fletcher, Bo Foxworth, Jeff Thomas Gardner, Matthew Goldsby, Robert Goldsby, Alexandra Goodman, Eve Gordon, Emily Goss, Belen Greene, Ellis Greer, Harry Groener, Matthew Grondin, Arye Gross, Tim Halligan, Simon Helberg, Alexandra Hellquist, Steve Hofvendahl, Shannon Holt, Sally Hughes, Karen Huie, Alberto Isaac, Antonio Jaramillo, Judy Louise Johnson, Dylan Jones, Veralyn Jones, Gerard Joseph, Luis Kelly-Duarte, Connor Kelly-Eiding, Michael Kirby, Lily Knight, Tamara Krinsky, Chelsea Kurtz, Mildred Marie Langford, Adrian LaTourelle, Paul Lazarus, Jay Lee, Emily Lenkeit, Ian Littleworth, Melanie Lora, Henri Lubatti, Jazzlyn K. Lockett, Aaron Lyons, Jill Maglione, Abigail Marks, Leo Marks, Kwana Martinez, Anna Mathias, Kellie Matteson, Dakin Matthews, Sandra McClain, Don McManus, Anne McNaughton, Mike McShane, Desirée Mee Jung, Bill Mendieta, Peter Mendoza, Adam Meyer, Lynn Milgrim, Richard Miro, Elyse Mirto, Rosalyn Mitchell, Ned Mochel, Rebecca Mozo, Rob Nagle, Ann Noble, Jeffrey Nordling, Catia Ojeda, Linda Park, Robert Pine, Erin Pineda, Lawrence Pressman, Philip Proctor, John Prosky, Deborah Puette, Anna Quirino-Miranda, Carolyn Ratteray, Lloyd Roberson II, Spencer Rowe, Jeanne Sakata, Liza Seneca, Armin Shimerman, Stephanie Shroyer, John Sloan, Adam J. Smith, Kurtwood Smith, Peter James Smith, Devon Sorvari, Paul Stanko, Janellen Steininger, Joanna Strapp, Susan Sullivan, James Sutorius, Elizabeth Swain, Joel Swetow, Kitty Swink, Jeanne Syquia, Reba Thomas, R. Scott Thompson, Danielle Thorpe, Brian Tichnell, Jeff Torres, Jocelyn Towne, Rebekah Tripp, Marcelo Tubert, Peter Van Norden, Tim Venable, Geoffrey Wade, Todd Waring, Patrick Wenk-Wolff, Laura Wernette, Amelia White, Karen Malina White, Abby Wilde, Jules Wilcox, Paul Willson, Alicia Wollerton, Zoe Yale, Kelvin Yu, Buck Zachary, Lizzie Zerebko, Josh Zuckerman

TITANS

Specially designated company members who have contributed above and beyond!

John Achorn, John Apicella, Fran Bennett, Ralph Drischell, Robert Goldsby, Gregory Itzin, Dakin Matthews, Anne McNaughton, Rob Nagle, Angela Paton, Melinda Peterson, Philip Proctor, John Sloan, Kitty Swink

2024/25 SEASON

THE IMPORTANCE OF BEING EARNEST

WRITTEN BY

OSCAR WILDE

DIRECTED BY

GIGI BERMINGHAM

OCT 13 - NOV 18, 2024

TWELFTH NIGHT

WRITTEN BY

WILLIAM SHAKESPEARE

DIRECTED BY

ARMIN SHIMERMAN

FEB 9 - MAR 17, 2025

THE GLASS MENAGERIE

WRITTEN BY

TENNESSEE WILLIAMS

DIRECTED BY

CAROLYN RATTERAY

APR 27 - JUNE 2, 2025

