

# HAMLET

MAY 15-JUNE 20, 2022



**ANTAEUS**  
*Theatre Company*

*Ramón de Ocampo. Photo by Frank Ishman.*

# Antaeus Leadership Note



Photo by Frank Ishman

It is such a thrill to be back in the theater with you! One of the things we missed most over the past two years has been our artists and audiences being able to gather in person for a communal theater experience. We felt a great sense of homecoming in February when our community returned to the theater for our *ClassicsFest* reading series, and again in April when we explored five new plays during our *Lab Results* festival. We know that live theater looks a little different right now, and we are so grateful for your support as we navigate how to safely come together again.

At Antaeus, we remain committed to expanding our definition of the Classics. We often ask ourselves what it means to be a theater that produces Classics during this time in the American theater? This isn't new for us though, it's a continuation of something we have explored with many of our past productions. We feel strongly that great theater demands a multiplicity of voices sharing vast and varying ideas and perspectives. So, with this season, and in the future, we will look to produce a mixture of the Classics we all know and love, plays by writers who have been excluded from the historical canon, and new plays from living playwrights that can stand the test of time.

The Classics we look for are both timely and timeless. This season we will explore what it means to be human and our place in the world - both questions that we found ourselves reflecting on during the pandemic. First up is arguably one of William Shakespeare's greatest plays, *Hamlet*. With Shakespearean scholar Elizabeth Swain helping the production, and this stellar group of artists bringing the play to life, we look forward to being immersed into this world of revenge with you, as we all contemplate our own moral integrity.

This Fall, we hope you will join us for the first production of our 2022/23 Season, *Everybody* by Branden Jacobs-Jenkins. The play is a modern riff on the 15th-century morality play *Everyman*, and was a finalist for the 2018 Pulitzer Prize. Directed by Jennifer Chang, this is a journey through life's greatest mystery – the meaning of living.

If you haven't already, we also hope you will listen to *The Zip Code Plays: Los Angeles*, our original audio series that celebrates the culture and history of the diverse neighborhoods of Los Angeles. Not only has this series removed barriers for many theatergoers, it has also offered quality intimate theater - something that we greatly value - for audiences around the world. We are excited to continue exploring this digital programming as a permanent fixture of our seasons moving forward.

Thank you for continuing to join us and supporting Antaeus. We hope you enjoy *Hamlet*!

Bill Brochtrup  
Artistic Director

Ana Rose O'Halloran  
Producing Executive Director

Antaeus Theatre Company Presents

# Hamlet

By William Shakespeare

Directed by Elizabeth Swain

Scenic Designer

Stephen Gifford\*\*

Lighting Designer

Jared A. Sayeg\*\*

Props Designer

Shen Heckel

Choreographer

Liz LaMura

Assistant Director/Dramaturg

Kaite Brandt

Costume Designer

Dianne K. Graebner\*\*

Sound Designer

Cricket Myers\*\*

Violence Designer

Ned Mochel\*

Production Stage Manager

Taylor Anne Cullen\*

Assistant Stage Manager

Jessica Osorio

## Ensemble

Gregg T. Daniel\*, Ramón de Ocampo\*, Sally Hughes\*, Veralyn Jones\*,  
Michael Kirby\*, Lloyd Roberson II\*, Adam J. Smith\*, Joel Swetow\*,  
Jeanne Syquia\*, Peter Van Norden\*

This production is generously supported in part by Rosemary A. Hernandez.



*\*Member, Actors' Equity Association, the union of professional Actors and Stage Managers in the United States. This production is presented under the auspices of the Actors' Equity Los Angeles Membership Company Rule.*



*The Designers at this Theatre  
are Represented by  
United Scenic Artists Local USA 829  
of the International Alliance of Theatrical Stage Employees*

The video and/or audio recording of this performance by any means whatsoever is strictly prohibited.

# Director's Note

*Hamlet* is Shakespeare's most performed play, done all over the world and adapted for film, television, opera, comic books, novels and more. The enormous role of Hamlet is the crowning challenge for an actor, before (s)he is ready to take on King Lear. Hamlet takes a great moral journey as he seeks authenticity in a corrupt world. In the great soliloquies he ponders what it is to be human, alive and active.

Hamlet encounters a ghost who claims to be that of his father and who tells him a gruesome tale of being murdered by his brother, who then usurps his throne and marries his widow, at the time the crime of incest. He instructs Hamlet to take revenge. At the time both church and civil law forbade blood revenge, but nobility and honor demanded it. Hamlet quickly states an additional and the most crucial dilemma that will hound him for the first half of the play:

*"Be thou a spirit of health or a goblin damned  
Bring with thee airs from heaven or blasts from hell. Be thy intents wicked or  
charitable."*

To safeguard his own soul he must be sure that the Ghost is from heaven, "an honest ghost," before he can act. To bide time until he can be certain, he feigns madness, providing much of the comedy in this tragic play of revenge.

The story of *Hamlet* was first told by one Saxo Grammaticus in the 12th century. In 1570, Bellefontaine wrote a French version that Shakespeare could have read, and soon there was a now lost *Hamlet* play, known as the *UR Hamlet*. Some scholars ascribe it to Thomas Kyd, the great writer of Revenge Tragedy, others to Shakespeare himself who then re-wrote it for the play we know, probably first performed in 1601 and entered into the Stationer's Register in 1602. The next year the First Quarto appeared, seemingly composed from the faulty memory of actors who had been in it and were now pirating it. For example, "To be or not to be, that is the question," appears as "To be, or not to be, I there's the point." Consequently, this is now known as the "bad quarto." In 1603, The Second quarto appeared and is the reliable text taken from the author's papers. The First Folio of 1623 (the first publication of the complete works of Shakespeare) has a corrupt copy so it is not a reliable source.

An uncut production of *Hamlet* would take well over four hours, so I did some serious cutting. I hope I have retained the chief elements: the Christian framework, the belief in heaven and hell and ghosts, the fear of damnation, ideas of nobility and honor, the corrupt political world, and the moral dilemmas faced by Hamlet. It is also a very theatrical play, with not only the big play within the play and Hamlet's famous advice to the players, but Hamlet is constantly creating small, and often highly comic scenes, when feigning madness.

We have a cast of ten actors, some of whom will play multiple roles, a practice common in Shakespeare's companies, and at Antaeus too, as was seen in our last production of *Measure for Measure*.

Elizabeth Swain, Director

*Hamlet*

# Hamlet

## Cast of Characters

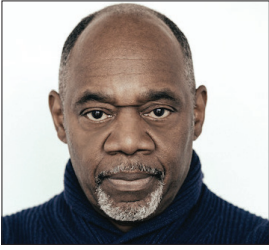
CLAUDIUS/GHOST	Gregg T. Daniel
HAMLET	Ramón de Ocampo
GUILDENSTERN/VOLTEMAND/REYNALDO/ FORTINBRAS	Sally Hughes
GERTRUDE	Veralyn Jones
LAERTES/PLAYER QUEEN	Michael Kirby
ROSENCRANTZ/BARNARDO/PLAYER 3 & 4/ PRIEST/COURTIER	Lloyd Roberson II
HORATIO	Adam J. Smith
MARCELLUS/FIRST PLAYER/CAPTAIN	Joel Swetow
OPHELIA/OSRIC	Jeanne Syquia
POLONIUS/GRAVEDIGGER	Peter Van Norden

## Special Thanks

Kate Flint  
Bertram Joseph  
Adam Meyer  
Linda Park  
Jocelyn Towne  
Dover Wilson  
Antaeus Membership Committee  
Adira's Vintage Boutique

This production is dedicated to Fran Bennett,  
a long-time Antaeus and friend who left us late last year.

# COMPANY - HAMLET



Gregg T. Daniel



Ramón de Ocampo



Sally Hughes



Veralyn Jones



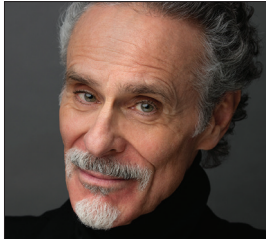
Michael Kirby



Lloyd Roberson II



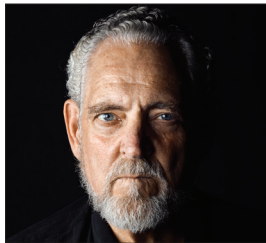
Adam J. Smith



Joel Swetow



Jeanne Syquia



Peter Van Norden

# CAST

**GREGG T. DANIEL (CLAUDIUS/GHOST):** Los Angeles: *The Duat* (Kirk Douglas Theatre); *Joe Turner* (Fountain Theatre, Mark Taper Forum); *Jitney*, *Fences*, *A Christmas Carol*, *All The Way*, *Death of a Salesman* (South Coast Repertory); *Jitney*, *The Whipping Man* (Pasadena Playhouse). Regional: *Master Harold* (Cape May Stage, Portland Stage, Actors Theatre of Louisville, International City Theatre); *Mother Courage*, *Julius Caesar*, *Cyrano de Bergerac* (Milwaukee Repertory Theatre); *Peer Gynt* (Hartford Stage Company); *Spell #7*, *Mojo and the Says* (Crossroads Theatre Company); *Romeo and Juliet*, *Two Gentlemen of Verona*, *A Midsummer Night's Dream*, *The Taming of the Shrew* (Shakespeare Center L.A.)

**RAMÓN DE OCAMPO (HAMLET):** is so proud to be exploring and performing this role at his artistic home. Also at ANTAEUS: *Measure for Measure* (Angelo/Claudio), *Henry IV, Part One* (Hal), *The Curse of Oedipus* (Oedipus), *Macbeth* (Banquo), *The Malcontent* (Mendoza), *King Lear* (Edgar), host of *The Zip Code Plays* Podcast. Other Theater: Kirk Douglas, Playwrights Arena, NY Public, Kennedy Center, Signature, NJSF, Ojai, O'neil, Yale, South Coast Rep, La Jolla Playhouse, Ma-Yi among others. TV: Recurring roles on: *12 Monkeys*, *The West Wing*, *Dynasty*, *MacGyver*, *Notorious*, *Counterpart*, *Major Crimes*, *Medium*, *Killer Instinct*, *Sons of Anarchy*. Recent Guest Star: *911*, *Magnum PI*, *Big Shot*. BFA: Carnegie Mellon. Narrator of over 300 audiobooks, including the *Diary of a Wimpy Kid* Series. AWARDS: OBIE Award; 16 Earphones awards,

Audie award, AudioFile "Golden Voice" - a lifetime achievement in the craft. This is for Lauren, my hero. And Wilder, my muse. IG/TWTR/FB @ramondeocampo

**SALLY HUGHES (GUILDENSTERN/VOLTEMAND/REYNALDO/FORTINBRAS):** At ANTAEUS: *As You Like It*; *Henry IV, Part One*; *Top Girls*. Theater: *Othello* (A Noise Within); *The City of Conversation* (Ensemble Theatre Co); *Colony Collapse* (Boston Court). Other work includes collaborations with Huntington Theatre Company, The Actors Studio, Manhattan Shakespeare Project, Columbia University, LAMDA and more. TV: *Code Black*, *Rosewood*, *Criminal Minds*, *General Hospital*, *Conan*. Education: B.F.A. Boston University.

**VERALYN JONES (GERTRUDE):** At ANTAEUS: *The Zip Code Plays*; *Wedding Band*; *You Can't Take It With You*; CLASSICSFEST: *Metamorphoses*; *The Rover*; *Along The River*, *Almost Winter*; *The Life of Galileo*; *Caesar & Cleopatra* & *The African Woman*. Other Theater: A Noise Within: (Resident Artist), Louise, *Seven Guitars*; Ensemble, *Sonnets For An Old Country*; Aunt Ester, *Gem Of The Ocean*; Hera, *Argonautika*; Mme Josephine, *The Madwoman Of Chaillot*; Elsewhere: South Coast Rep, Mark Taper Forum, Denver Center, International City Theatre, Kirk Douglas Theatre, Boston Court, Los Angeles Women's Shakespeare Company, Lower Depth Theatre. International: La Scala Theatre, Stockholm, Sweden. TV: *Equalizer*, *Nana*, *S.W.A.T*, *The Unit*, *Southland*, *Threat Matrix*, *City Of Angels* & *Brooklyn South*. Ms Jones is a Co-Founder & Associate Producer at, Lower Depth Theatre. Love to G & K!

**MICHAEL KIRBY (LAERTES/PLAYER QUEEN):** has been working with ANTAEUS since 2001 in *A Tale of Charles Dickens*, *Chekhov x 4*, *Cat on a Hot Tin Roof*, and *Henry IV, Part One*. Other Theater: *Bent*, *What the Butler Saw*, *School of Night*, *The Goat* (Mark Taper Forum); *Dracula* (LA Theatre Works); *Tickled Pink* (Laguna Playhouse); *The American Plan*, *Romeo and Juliet*, *Merry Wives of Windsor*, *Two Gentlemen of Verona*, *Measure for Measure*, *Hamlet*, *Othello* (Old Globe); *Romeo and Juliet*, *Midsummer Night's Dream* (Kingsmen); *The Glass Menagerie* (Syracuse Stage); *Leading Ladies* (Barnstormers Theatre); *Spite for Spite*, *Don Juan* (Andak Stage Company). Off-Broadway: *Othello*, *Richard III*. Film: *Brown Paper Bag*, *Weekend at Jesus'*, *Hells Heart*, *Connected*, *Passing Normal*, *Chase The Slut*, *Benevolence*. M.F.A. Old Globe. For Heather, thanks for everything.

**LLOYD ROBERSON II (ROSENCRANTZ/BARNARDO/PLAYER 3 & 4/PRIEST/COURTIER):** At ANTAEUS: *Measure for Measure*; readings of *Speakeasy*, *The Hot L Baltimore*, *The Rover*, *Mayor of the 85th Floor*. Frequent participant of the Antaeus Playwrights Lab. Other Theater: *My Children, My Africa!* (Marin Theatre Company); *A Christmas Carol* (American Conservatory Theater); *Exonerated* (Lynx Performance Theatre); *Good Breeding* (Yerba Buena Center for the Arts); *Hamlet Machine* (Ion Theatre). TV/ Film: *40*; *Easy Made Hard*; *The Institute*. Training: B.A., San Diego State University; M.F.A., American Conservatory Theater. Thank you to my Loves Amy & BB.

**ADAM J. SMITH (HORATIO):** At ANTAEUS: *Cloud 9*; *As You Like It*; *Henry IV, Part One*; *The Curse of Oedipus*. Other Theater: Pasadena Playhouse, CTG/The Kirk Douglas, CTG/Mark Taper Forum, South Coast Rep, International City Theatre, La Jolla Playhouse, Disney Concert Hall (alongside LA Philharmonic), 6th Act, Chalk Rep, The Blank, EST/LA, Boston Court, Ojai Playwrights Conference, Chautauqua Theater Company, numerous Off- and Off-Off-B'way. Television/Film: *Taken 3*, *Bloody Bridget* (upcoming), *Zombie Strippers*, *The Good Doctor*, *Jane the Virgin*, *Orville*, *Scandal*, *Castle*, 90210, *Medium*, *Without a Trace*, *Numb3rs*, *Victorious*, *Chemistry*, *Deceit*, *As the World Turns*, many others. Winner 2006 Emmy Award: *When Things Get Small*. Faculty member at CalArts School of Theater. M.F.A. UCSD/La Jolla Playhouse, B.A. Duke (magna cum laude).

**JOEL SWETOW (MARCELLUS/ FIRST PLAYER/CAPTAIN):** At ANTAEUS: *Henry IV, Part One* and many *ClassicsFests*, Workshops and Readings. Other Los Angeles Theater: *Antony*, *Antony and Cleopatra* (Theatricum Botanicum); *Les Blancs*, *The Suppliant Women* (Rogue Machine Theatre); *Forever House* (Skylight Theatre); At A Noise Within: *Estragon*, *Waiting for Godot*; *Scrooge*, *A Christmas Carol*; *Malvolio*, *Twelfth Night*; *Vershinin*, *The Three Sisters*; *Arnolphe*, *The School For Wives*; title roles in *Cymbeline*, *Tartuffe*, *Merchant of Venice*, and tons more. NYC and regional theater roles include leads in *The Normal Heart*, *Talley's Folly*, and *The Sound of Teeth*. Directed *The Cherry Orchard*, *As You Like It*, *Miss Witherspoon*, *The Learned Ladies*, among others. TV/Film:



*American Horror Stories, Kidding, The Orville, Lucifer, Silicon Valley, Charmed, Alice in Wonderland, Lord of Illusions,* among many others. Been heard in reams of animated projects, such as *The Lorax*, and scads of commercials. See more on IMDB.

**JEANNE SYQUIA (OPHELIA/OSRIC):**

At ANTAEUS: *Three Days in the Country; Top Girls; The Autumn Garden.* Regional: *King Charles III* (Arizona Theatre Company); *The Nether* (Kirk Douglas Theatre); *The Tall Girls* (La Jolla Playhouse, DNA Series); *The Jacksonian* (Geffen Playhouse, U/S). Additional Theater includes: the one woman show *All American Girl* (InterACT Theatre Company); *Jane Eyre* (L.A. Theatre Works); *The House Of Yes* (Zephyr Theatre); *Sidhe* (The Road Theatre). TV/ Film: *Grey's Anatomy, The Mentalist, Brothers & Sisters and BuddyMoon.*

**PETER VAN NORDEN (POLONIUS/ GRAVEDIGGER):** At ANTAEUS: *The Hothouse* (2019 Ovation Award for Best Actor in a Drama); *Macbeth; The Liar; American Tales; The Man Who Had All The Luck.* Recent appearances include: *Red Ink* (2020 Ovation nominations for Best Featured Actor in a Play), covering Tom Hanks and performing the role of 'Falstaff' for the LA Shakespeare Center's *Henry IV, Parts I and II.* At La Mirada Theatre he recently appeared in 1776 (as "Ben Franklin") and in *Singin' in the Rain.* Film and TV roles include leads in *The Accused, Police Academy 2* and the Stephen King mini-series, *The Stand.* [petervannorden.com.](http://petervannorden.com)

## PRODUCTION

**ELIZABETH SWAIN (DIRECTOR):** is an actor, director and teacher, and a member of ANTAEUS. Directing includes: *Measure for Measure* (co-directed with Armin Shimerman at ANTAEUS); *Two Noble Kinsmen* (Kingsmen Shakespeare Festival); *An Evening of Betrayal* (The 6th Act); *The Winter's Tale*; three *Hamlets*; two *Macbeths*; *A Midsummer Night's Dream*; Marston's *The Malcontent* (ANTAEUS); Aphra Behn's *The Rover* and *The Lucky Chance*; several new plays, and Dana Schwartz's *Early Birds* (Moving Arts). She recently directed a zoom production of *The Comedy of Errors* for the Classical Theatre lab, for whom she has directed many staged readings. For ANTAEUS she has directed six *ClassicsFest* readings. As an actor she has worked on Broadway, Off-Broadway and in regional theaters, including the Los Angeles Women's Shakespeare Company. She has taught at Cal Arts, Barnard College, and is Professor Emerita at Marymount Manhattan College. She was awarded an NEH Fellowship to study at Shakespeare's Globe in London and holds a Ph.D. from the CUNY Graduate Center. [elizabethswain.net](http://elizabethswain.net)

**BILL BROCHTRUP (ARTISTIC DIRECTOR):** At ANTAEUS: *Cloud 9; Mrs. Warren's Profession; The Seagull; Peace in Our Time; The Malcontent; Cousin Bette; Tonight at 8:30; Pera Palas.* Other Theater: Primary Stages, South Coast Repertory, Ensemble Theatre Company, The Fountain Theatre, Black Dahlia Theatre, Odyssey Theatre Ensemble, L.A. Theatre Works, Pasadena Playhouse, Rogue Machine Theatre. Film: *Hypnotized; Life As We Know It; He's*

*Just Not That Into You; Ravenous.* TV: Recurring on *Major Crimes; Shameless; Kendra*; Series Regular on *Public Morals; Total Security; NYPD Blue.* Spoken Word: *Sit 'n Spin, Rant & Rave, Spark Off Rose*, as well as numerous other storytelling venues. [billbrochtrup.com](http://billbrochtrup.com)

**ANA ROSE O'HALLORAN  
(PRODUCING EXECUTIVE**

**DIRECTOR):** Ana Rose joined ANTAEUS in 2015. Previously, she served as the Senior Director at The Pablove Foundation, and in various roles in the development department at Center Theatre Group. She received her M.F.A. in Theatre Management from California State University, Long Beach and a B.F.A. in Theatre Management and a B.F.A. in Performance from Ohio University.

**STEPHEN GIFFORD (SCENIC**

**DESIGNER):** Past shows for ANTAEUS include *Top Girls* and *The Crucible*. His design work has been featured at numerous theaters nationally and internationally including: The Grand Ole Opry, The Chicago Theatre, Madison Square Garden, The El Sett & Abdel Halim Theaters (Riyadh), Sacramento Music Circus, The Walnut Street Theatre, 5th Avenue Theatre, Juneau Lyric Opera, La Mirada Performing Arts Center/McCoy Rigby, 3D Theatricals, Laguna Playhouse and many more. He has garnered many awards and nominations for his work and was awarded The Bob Z Award for career achievement in set design by the LADCC. [stephengifforddesign.com](http://stephengifforddesign.com)

**DIANNE K. GRAEBNER (COSTUME  
DESIGNER):** is a Costume Designer and University lecturer who is thrilled

to be working with ANTAEUS. She is a Mason Gross School of the Arts, Rutgers University Alum and earned her M.F.A. in Costume/Set Design. Dianne has designed and created costumes nationwide in theater, film and television. She has designed Off Broadway, regionally, and internationally for The English Theatre, Frankfurt, Germany and has received numerous nominations and awards for her work. She has originated the costumes for many new works/world premieres and was the Crafts Supervisor, Milliner, and Assistant Costume Designer for Center Theatre Group for many years. She is a member of United Scenic Artists Local-829. [diannegraebner.com](http://diannegraebner.com)

**JARED A. SAYEG (LIGHTING**

**DESIGNER):** At ANTAEUS: *The Little Foxes; Three Days in the Country; Cat on a Hot Tin Roof; Picnic; Top Girls.* Ovation & LADCC Kinetic Lighting Award recipient. Designs for theater, opera, musicals, ballet, themed attractions, exhibits and architectural installations throughout the world. Broadway/ National Tours: *The Illusionists.* Regional: Center Theatre Group, South Coast Repertory, McCoy Rigby Entertainment, International City Theatre, Pasadena Playhouse, Reprise, Ensemble Theatre Company, Laguna Playhouse, Virginia Stage Company, 5th Avenue Theatre, Shakespeare Theatre of New Jersey. Notable projects include LA Opera (four seasons), lighting Pope Benedict XVI in NYC and the USA International Ballet Competitions. Jared became the youngest member of the United Scenic Artist-Local 829, and currently serves as Vice Chair to the executive board. [jaslighting.com](http://jaslighting.com)

**CRICKET MYERS (SOUND DESIGNER):**

On Broadway, Cricket earned a Tony Nomination and a Drama Desk Award for her design of *Bengal Tiger at the Baghdad Zoo*. Regional designs include La Jolla Playhouse, The Ahmanson, The Mark Taper Forum, South Coast Rep, Shakespeare Theatre Company of DC, The Kirk Douglas Theater, Pasadena Playhouse, and the Geffen Theater. She has earned 24 Ovation Nominations, as well as winning The Ruth Morley Award from the League of Professional Theater Women, The Kinetic Award for Outstanding Achievement in Theatrical Design, an LADCC and a Garland Award in Los Angeles. [cricketmysers.com](http://cricketmysers.com)

**SHEN HECKEL (PROPS DESIGNER):**

is happy to be returning to ANTAEUS. A graduate of UCLA Theatre Film and Television School and Lincoln Center Director's Lab, he has worked on dozens of theater productions and in film and commercial work. Film: resident production designer at Pareto Labs, art department for various national TV commercials. Theater: prop design *Eight Nights* (ANTAEUS); *Anna in the Tropics*, *Metamorphosis* (A Noise Within); *The Children*, *Hype Man* (The Fountain Theatre); producer and prop design of *The Last Five Years* and *One Flew Over the Cuckoo's Nest: the immersive experience* (After Hours Theatre Company); assistant director *Allegiance* (East West Players); assistant director *Rotterdam* (Center Theatre Group's Block Party); assistant director *Hostage* (The Skylight Theatre). Shen is also the managing director at After Hours Theatre Company and is a resident guest artist at CSUN. For more info please visit [shenheckel.weebly.com](http://shenheckel.weebly.com)

**NED MOCHEL (VIOLENCE**

**DESIGNER):** At ANTAEUS: *Les Liaisons Dangereuses*. Other notable violence design credits include: *True West* (Steppenwolf Theatre, Chicago); *The Song of Jacob Zulu* (Broadway); *Guards at the Taj*, *Bad Jews*, *Wait Until Dark*, *American Buffalo*, *Miss Julie*, *Superior Donuts* (Geffen Playhouse); and *The Jacksonian* which was also produced off-Broadway at the Acorn Theater in NYC; *Trevor* (Circle X); *Gus's Fashion And Shoes* (VS Theatre), *Cops and Friends of Cops* (2013 LADC Award recipient), *On an Average Day* (2009 LADC Award recipient); Tracy Letts' *Killer Joe and Bug* (west coast premieres); and The Lyric Opera's *McTeague*, directed by Robert Altman.

**LIZ LAMURA (CHOREOGRAPHER):** is

an intimacy coordinator, educator, and choreographer.

**KAITE BRANDT (ASSISTANT DIRECTOR/DRAMATURG):** At

ANTAEUS: *Measure for Measure*. Other Theater: *Julius Caesar* (Warriors for Peace); *Much Ado About Nothing*, *A Midsummer Night's Dream*, *Love's Labour's Lost* (Sierra Madre Shakespeare Festival); *Love's Labour's Lost* (Chase What Flies); *Much Ado About Nothing* (The Unlikely Shakespeare Company). Video Games: *The Big Con*, *Fossil Echo*, *Almightree*; *The Last Giver*. Training: B.A., Columbia College Hollywood.

**TAYLOR ANNE CULLEN****(PRODUCTION STAGE MANAGER):**

At ANTAEUS: *Measure for Measure*; *The Caucasian Chalk Circle*; *The Little Foxes*. Other Theater: *Anna in the Tropics* (A Noise Within); *Native Son* (Kirk Douglas

Theatre); *Seven, How We're Different From Animals* (Élan Ensemble); *Alcina* (USC Thornton School of Music); *A Weekend with Pablo Picasso* (Casa 0101 Theatre); *The Kentucky Cycle, Mockingbird, Love and Information, That Long Damn Dark* (USC School of Dramatic Arts). Stage Management Internship credits include: *Tosca* (LA Opera); *Bull, Dutch Masters* (Rogue Machine Theatre), and *Annapurna* (The New Group). Training: B.F.A - Stage Management, University of Southern California.

**ZACH PHANEUF (PRODUCTION MANAGER):** This is Zach's first show at ANTAEUS! He has worked as an actor, writer, director, carpenter, painter, and technical director at many theaters around the country. Credits include: *King Lear, Oliver!, Frankenstein, The Wild Duck, Julius Caesar* (Quintessence Theatre Group, Philadelphia); *The*

*Odd Couple, Wait Until Dark, Crimes of the Heart, Little Shop of Horrors* (Shawnee Summer Theatre of Greene County, Indiana); original works as writer and director *Lemon Shaker Pie* and *Us and You* (premiering this summer at the Hollywood Fringe Festival!) Film/TV: *Empires of Excess* and *The Food that Built America* (The History Channel). Much love to Kristen. zachphaneuf.com

**JESSICA OSORIO (ASSISTANT STAGE MANAGER):** At ANTAEUS: *As You Like It; Les Liaisons Dangereuses; The Hothouse; Native Son; Three Days In The Country; The Cripple of Inishmaan; The Little Foxes; Diana of Dobson's; The Caucasian Chalk Circle*. Other Credits: *If All The Sky Were Paper* (Kirk Douglas Theatre). Training: AMDA LA - B.F.A. Welcome back, friends! Cheers to everyone involved with bringing this story to life. Enjoy the magic!

# UNCLE VANYA



*"Devastatingly intimate"*  
— THE NEW YORK TIMES

by  
ANTON CHEKHOV  
Directed by  
MICHAEL MICHETTI

Translated by  
RICHARD NELSON,  
RICHARD PEVEAR,  
and LARISSA  
VOLOKHONSKY

JUN 1 - JUN 26

PASADENA  
PLAYHOUSE

626-356-PLAY | pasadenaplayhouse.org | Tickets start at \$30

# Thank You to our Extended Family of Loyal Supporters

As a nonprofit organization, we rely on contributions for the majority of our income. Everything we do is made possible by the extraordinary generosity of this community! Donations support our productions, digital programming, reading series, subsidized ticket program, arts education, and so much more.

**Visit [antaeus.org/support-us](https://antaeus.org/support-us) to join our community of supporters today!**

*If you'd like to make a pledge, arrange a recurring gift, or inform us about a planned gift, please contact Producing Executive Director, Ana Rose O'Halloran, at [anarose@antaeus.org](mailto:anarose@antaeus.org) or 818.506.5436.*

---

## CORPORATE SPONSORSHIP

Join other business leaders by supporting Antaeus Theatre Company's award-winning programming through sponsorship and matching gift programs.

### Corporate Sponsors

Amazon Associates  
The Bill & Melinda Gates Foundation  
Bush Gottlieb  
Cigna Foundation  
Deutsche Bank Americas Foundation  
The Kroger Co. Foundation  
Netflix  
Sony Interactive Entertainment  
Theatre for a New Audience  
The Walt Disney Company Foundation

*Based on donations made between 4/1/21 - 3/31/22*

## PRODUCER'S CIRCLE

The Producer's Circle ensures we are never limited in our artistic pursuits on our stages. This group believes in sustained excellence and allows Antaeus to produce plays no matter the cast size or production needs.

### \$50,000+

Kiki & David Gindler  
The Ahmanson Foundation  
State of California  
The Michael J. Connell Foundation  
U.S. Small Business Administration

### \$25,000+

The David Lee Foundation  
Jerry & Terri Kohl  
Al Latham & Elaine Kramer  
Mary Lambert  
The Ralph M. Parsons Foundation  
Kitty Swink & Armin Shimerman  
Daniel Blinkoff & Tamlyn Tomita  
Belinda & Jack Walker

### \$15,000+

Ruth Eliel & Bill Cooney  
Karen Frederiksen  
Rosemary A. Hernandez  
Los Angeles County Department of Arts and Culture  
The Shubert Foundation  
Jocelyn Towne & Simon Helberg

## 30TH ANNIVERSARY PLEDGES

Thank you to the following donors for making commitments in support of our 30th Anniversary Campaign:

Sonja Berggren & Patrick Seaver  
Karen Frederiksen  
Al Latham & Elaine Kramer  
Mary Lambert  
Kitty Swink & Armin Shimerman  
Jack & Belinda Walker

*Based on donations made between 4/1/21 - 3/31/22*  
*\*Gift directly supports Arts Education programming at Antaeus*  
*+ Indicates monthly sustaining donor*

# DIRECTOR'S CIRCLE

The Director's Circle is a distinguished group of theater lovers who provide general operating support to Antaeus. In recognition of this support, they receive invitations to special events and VIP access to Antaeus' artists.

## \$10,000+

Elizabeth & Richard Berman\*  
Melinda & Robert LeMoine +  
Melinda Peterson & Phil Proctor +  
The Philip and Muriel Berman  
Foundation  
Debra Thompson & Lawrence Riff

## \$5,000+

Bill Brochtrup  
Evie & John DiCiaccio  
James Duff & Phillip Keene  
City of Glendale  
The Green Foundation  
J Robin Groves +  
John & Beverly Stauffer Foundation\*  
Scott Fraser & Catherine Jurca  
Molly Munger & Steve English

Anthony J. Oncidi  
Performing Arts Readiness  
Joan Pirkle Smith & Kurtwood Smith  
Dan Putman  
Jaye Scholl & Charlie Bohlen +  
Laura A. Seigle  
Reba & Geoffrey Thomas  
Arlene Vidor

## \$2,500+

Deborah & Andrew Bogen  
Dawn Didawick & Harry Groener +  
Alice & Sam Johnston +  
The Millin Family  
Michael Morrell

Richard Nathan +  
Cara Robertson  
Jennifer & Matthew Rowland  
April Webster

## \$1,500+

Anonymous  
Amy Aquino & Drew McCoy  
Kahsaree & F. Kenneth Baldwin  
Gigi Birmingham  
Steven Warheit & Jean Christensen  
Carleton Eastlake & Loraine Despres  
Paul M Holmes +  
Anna Mathias & Alan Shearman  
Kitty McNamee & Paul Lazarus  
Bruce & Valerie Merritt  
The Millikans +

Suzy Moser  
Ana Rose & Grant O'Halloran  
Michael R. Oppenheim  
Pasadena International Film Festival  
Gwynne & Robert Pine +  
Ned Schmidtke +  
R. Scott Thompson  
Peter & Wendy Van Norden  
Patty Woo & Steven Poretzky

*Based on donations made between 4/1/21 - 3/31/22*  
*\*Gift directly supports Arts Education programming at Antaeus*  
*+ Indicates monthly sustaining donor*

# STAGE CREW

The Stage Crew community of donors support the production of great plays,  
innovative arts education outreach, and the training of the next generation of actors.

## \$1,000+

Kathy Baker & Steve  
Robman

Jenna Blaustein & Robert  
Leventer

Anne Gee Byrd  
Catherine Caplin

Sharon & Rick Ellingsen  
Jeanie Fiskin & Klarissa  
Hollander

Olga Garay-English +  
Diane Glatt & David Holtz  
Kahn Education  
Foundation

Kerry Korf  
Anne McNaughton &  
Dakin Matthews  
Dan Oliverio +  
Ronus Foundation

Susie Schwarz & Stuart  
Berton  
Larry Title & Ellen  
Shavelson  
The Sheri and Les Biller  
Family Foundation  
Willow Cabin Productions  
Richard Yaffe

## \$500+

Anonymous  
Robert C. Anderson  
Laura & Ira Behr  
Joni & Miles Benickes  
Bill Butler +

Chancy Memorial  
Foundation

Karen Constine  
Felicia Davis & Eric  
Gutshall

Paula & Art Devine  
Barbara Durham +  
Colleen & Paul Eiding  
Carol Eliel & Tom Muller

Leslie & Robert Gordon +  
Melanie Hayes +  
Patricia & Richard Hughes  
Alan Baral & Sharre Jacoby  
Janice & Mark Kaspersen  
William & Priscilla Kennedy  
Jack & Maureen Kolosky  
Deb Lacusta & Dan  
Castellaneta

Howard & Patrick  
Leder-Morrow  
Elaine Lockhart-Mummary  
Susan & Bob Long  
Jill Maglione & Paul Van  
Dorpe

Drs. Marjorie Marks Fond  
& Richard Z. Fond

Myron Meisel  
Jack Needleman  
David Rambo & Ted Heyck

Gregory Shapton &  
Barbara Rugeley  
George & Carolyn Seitz

Elizabeth Swain  
Drs. Ligia & William  
Toutant

Lori & Marcelo Tubert  
Dale E. Turner  
Les Wieder

## \$100+

Anonymous  
Sonja & Albert Alarr  
Heather Allyn & Rob  
Nagle +

John & Carol Amberg  
Perry & Mary Bankston

Michael Barker +  
Mary Lou Belli & Charles  
Dougherty

Richard & Elizabeth Berry  
Jennifer Berry & Len

Jacobson  
Jay Bevan

Kathryn Bikle & Dan  
Weitekamp  
Isabel Boniface  
Joan Borgman & John  
Apicella +

Mary Bower  
Lance Brady  
Kaite Brandt +  
Edward Broomfield  
Madelyn Cain-Ingles

Karen Chiella +  
Drs. Laurie Christensen &  
Colin Ma

Linda & Andrew Cipes

Paula Cizmar & Dan Cariaga  
Stephanie & Dennis Cohen

Kathy Connell & Daryl  
Anderson  
Julie & Bob Craft

Sandra Cruze +  
Sondra Currie & Alan J. Levi

Rod Danielson  
Diana Daves  
Angela J. Davis

Krishna & Cam Deaver  
Andrew R. DeMar Family  
Foundation

Sean Diamond

*Based on donations made between 4/1/21 - 3/31/22*

*\*Gift directly supports Arts Education programming at Antaeus*

*+ Indicates monthly sustaining donor*



Colleen Dodson Baker & Ray Baker	Bjørn Johnson	Kate Roe
Ed Dougherty	Denise Y. Kautter	Michael Rosenberg
Susie Edberg & Allen Grogan	Tamara Krinsky	John Allee & Kathleen Ross-Allee
Eve England	Monte & Valerie Kuklenski	Stephanie Russin
Sheldon Epps & Lesley Brander-Epps	Alberto Isaac & Emily Kuroda	Mark Saltzman
Janet Fahey	Bonnie & Jim Lambert	Nicole Samsel & Kevin O'Callaghan
Jeanette Farr-Harkins	Tom & Gloria Lang	Dianne & Mark Samsel
Bo Foxworth	Lanzafame Family Trust +	John Schuning & Gregory Ross +
James Freed	Brenda Levin & David Abel	Ruth & David Seigle
Alan & Kathie Freeman	Sandi Logan	Steven Seliger
Bill & Isabel Frischman	Abigail Marks +	Liza Seneca & John Seitzer
Homer Frizzell	Kwana Martinez & Dan Hamlin +	Nayan Shah & Ken Foster
Barbara & Fred Gable	Jeffrey Gale & Julane Marx	Stephanie Shroyer
Jeff Gardner & Dylan Jones	Gail & Tony McBride	Stuart Sigman
Kimiko Gelman & John Prosky	Philip McKinley	John Sloan +
Carlotta Glackin	Timothy & Ruth McMichens	Margaret & David Sloan
Kevin Goetz	Roberta Medford	Adam Smith
Linda & Mike Goldberg	Desirée Mee Jung & Brandon Kruhm	Devon Sorvari & Steven Brand
Eric & Joyce Goldman	Marlene Mills	Patricia & Lawrence Sparks
Matthew Goldsby	Kerry Mohnike +	Janellen Steining
Eve Gordon & Todd Waring	Maureen & Michael Murphy	Eileen T'Kaye & David Bischoff
Susan Gosden	Arianne Neumark	Millee Taggart-Ratcliffe +
Howard Gradet	Catia Ojeda & Alex Goldberg	Judy & Mark Taylor
Gretchen & Richard Grant	Daniel Olivas	Bonnie Thompson
Cathy & Jon Grayson	Anahid & Ara Oshagan	Sharon Thompson
Margaret & Paul Grossman	Jeff Padden	Laura Frankos Turtledove
Susan Gruner	Linda Park Bess & Daniel Park Bess	Elizabeth J. von Schoff
Tim Halligan	Laurel Patric	William & Simone Warren +
Laurie Hasencamp & Mike Lurey	Louise Peebles	Stanley & Laurie Whitcomb
Gina Hecht	Dr. Kristine Penner & Mr. Steven Klein	Karen Malina White
Michael Hegeman	Michael Peretzian	Asuman Yilmaz
Marilyn Hewitt	Steven & Susan Peterman	
Beverly Higginson	Anthony Portantino	
Katie Hotchkiss +	Lawrence Pressman	
Marty & Merrilee Howard	Joanna & Paul Pringle	
Rosemary Huang +	Amy Proctor	
Karen Huie	Pamela Putnam & Cory Whittaker	
Sheila and Milton Hyman Foundation	Anna Quirino-Miranda	
Ellen & Bill Ireland	Stacy Ray	
Tom Jacobson & Ramone Munoz	Deborah Reed	
Matthew D. Jaeger	Rich Reinhart	
Andrew F. Johnson	Stephen & Melanie Rockwell	

*Based on donations made between 4/1/21 - 3/31/22*

*\*Gift directly supports Arts Education programming at Antaeus*

*+ Indicates monthly sustaining donor*

# Antaeus Staff

Producing Executive Director

Ana Rose O'Halloran

Artistic Director

Bill Brochtrup

Director of Operations

Alvin Ford, Jr.

Production Manager

Zach Phaneuf

Technical Director

Adam Meyer

Donor Engagement Coordinator

Isabel Ngo

Bookkeeper

Amy Michner

Executive Assistant

Courtney Agustin

Publicist

Lucy Pollak

Antaeus Founders

Dakin Matthews, Lillian Groag

## **ANTAEUS BOARD OF DIRECTORS**

Evie DiCiaccio, Chair

Sonja Berggren

Stuart Berton

Charlie Bohlen

Bill Brochtrup

Bob Craft

Ruth Eliel

David Gindler

Tamara Krinsky

Mary Lambert

Melinda Eades LeMoine

Kwana Martinez

Desirée Mee Jung

Ana Rose O'Halloran

Ara Oshagan

Linda Park

Lloyd Roberson II

Laura Seigle

Adam Smith

Reba Thomas

Debra Thompson

Jocelyn Towne

Arlene Vidor

Jack Walker

April Webster

## Ensemble Members

John Achorn, Bernard K. Addison, Rhonda Aldrich, John Allee, Heather Allyn, Tony Amendola, John Apicella, Ben Atkinson, Tessa Auberjonois, Paul Baird, Gigi Bermingham, Daniel Bess, Daniel Blinkoff, John Bobek, Andrew Borba, Chad Borden, Christopher Breyer, Bill Brochtrup, Anne Gee Byrd, Nicholas Cagle, Jane Carr, Jon Chaffin, Emily Chase, Kendra Chell, Shannon Lee Clair, Josh Clark, Avery Clyde, Barry Creyton, Paul Culos, Nicholas D'Agosto, Gregg Daniel, Julia Davis, Jason Delane Lee, John DeMita, Ramón de Ocampo, David DeSantos, Seamus Dever, Etta Devine, Gabriel Diani, Dawn Didawick, Francia DiMase, Mark Doerr, Daniel Dorr, Nike Doukas, Sarah Drew, Paul Eiding, Nicole Erb, Terry Evans, Scott Ferrara, James Ferrero, Martin Ferrero, Karianne Flaathen, Julia Fletcher, Bo Foxworth, Jeff Thomas Gardner, Matthew Goldsby, Robert Goldsby, Alexandra Goodman, Eve Gordon, Emily Goss, Belen Greene, Ellis Greer, Harry Groener, Matthew Grondin, Arye Gross, Tim Halligan, Simon Helberg, Steve Hofvendahl, Shannon Holt, Sally Hughes, Alberto Isaac, Gregory Itzin, Antonio Jaramillo, Dylan Jones, Veralyn Jones, Luis Kelly-Duarte, Connor Kelly-Eiding, Michael Kirby, Lily Knight, Tamara Krinsky, Chelsea Kurtz, Adrian LaTourelle, Paul Lazarus, Jay Lee, Emily Lenkeit, Ian Littleworth, Melanie Lora, Henri Lubatti, Jazzlyn Luckett, Aaron Lyons, Jill Maglione, Abigail Marks, Leo Marks, Kwana Martinez, Anna Mathias, Kellie Matteson, Dakin Matthews, Sandra McClain, Don R. McManus, Anne McNaughton, Mike McShane, Desirée Mee Jung, Bill Mendieta, Peter Mendoza, Adam Meyer, Lynn Milgrim, Elyse Mirto, Richard Miro, Rosalyn Mitchell, Ned Mochel, Rebecca Mozo, Rob Nagle, Ann Noble, Jeffrey Nordling, Linda Park, Melinda Peterson, Robert Pine, Lawrence Pressman, Philip Proctor, John Prosky, Deborah Puette, Anna Quirino-Miranda, Carolyn Ratteray, Lloyd Roberson II, Spencer Rowe, Jeanne Sakata, Ned Schmidtke, Liza Seneca, Armin Shimerman, Stephanie Shroyer, John Sloan, Adam J. Smith, Kurtwood Smith, Paul Stanko, Janellen Steinger, Joanna Strapp, Susan Sullivan, James Tutorius, Elizabeth Swain, Joel Swetow, Kitty Swink, Jeanne Syquia, Reba Thomas, R. Scott Thompson, Danielle Thorpe, Jeff Torres, Jocelyn Towne, Rebekah Tripp, Marcelo Tubert, Peter Van Norden, Tim Venable, Geoffrey Wade, Todd Waring, Patrick Wenk-Wolff, Laura Wernette, Amelia White, Karen Malina White, Abby Wilde, Jules Willcox, Paul Willson, Alicia Wollerton, Kelvin Yu, Buck Zachary, Josh Zuckerman

## Playwrights Lab Members

Sean Abley, Nayna Agrawal, Alex Alpharaoh, Steve Apostolina, Barbara Nell Beery, Jennifer Berry, Diana Burbano, Jami Brandli, Peppur Chambers, Paula Cizmar, Doug Cooney, Jihan Crowther, Angela J. Davis, Kevin Delin, Matthew Doherty, Natalie Nicole Dressel, Jeanette Farr-Harkins, Alan Freeman, Cyndy Fujikawa, Alex Goldberg, Franky Gonzalez, Deb Hiatt, Dan Hirsch, Aja Houston, Christina Hjelm, Karen Howes, Karen Huie, Julie Jigour, Jonathan Josephson, Luis Kelly-Duarte, Lisa Kenner Grissom, Carolyn Kras, Mildred Inez Lewis, Ali MacLean, Jennifer Maisel, Anna Mathias, Dakin Matthews, Robert Menna, Alison Minami, Ed Napier, Ann Noble, Devon O'Brien, Tira Palmquist, Chandler Patton, Jennifer Rowland, Eric Rudnick, Jeanne Sakata, Steve Serpas, Steve Shade, Lori Tubert, Sarah Tuft, Stephanie Alison Walker, Ashley Rose Wellman, Elizabeth Wong, Khari Wyatt, Marlow Wyatt

# EVERYBODY

BY BRANDEN JACOBS-JENKINS  
DIRECTED BY JENNIFER CHANG

SEPTEMBER 11 - OCTOBER 17, 2022

*A modern riff on the 15th-century morality play Everyman, this is the story of "Everybody," as we journey through life's greatest mystery—the meaning of living. Symbolizing the randomness of life and death, some of the cast are assigned roles by lottery during the show, creating a unique viewing experience each night.*