

WILLIAM SHAKESPEARE'S

TWELFTH NIGHT

DIRECTED BY

ARMIN SHIMERMAN

FEB 9 - MAR 17, 2025

ANTAEUS
Theatre Company

Antaeus Leadership Note



Photo by Frank Ishman

Welcome to *Twelfth Night*, one of Shakespeare's most beloved and playful masterpieces. At Antaeus, we believe that classics like this continue to resonate because they explore universal themes – love, identity, belonging – that remain as relevant today as they were centuries ago. They offer us both a mirror and a map, reflecting our shared humanity while suggesting pathways we might explore.

As with all the plays this season, *Twelfth Night* celebrates those who find themselves on the outside looking in – characters searching for belonging while insisting on being accepted for what makes them unique. The play reminds us of the courage it takes to be truly seen.

Many years ago, Antaeus was conceived as sort of a study group, composed of artists who wanted to explore the challenges of the language and epic stories of classical theater. When we added full-length productions and you, the audience, to our community, we wanted you to be able to deepen your own connection to the classics through educational opportunities. From Academy classes to workshops and lectures, we provide patrons and artists alike with ways to explore the themes, the playwrights, and other unique elements of each of our productions and seasons. If you'd like to explore *Twelfth Night* more deeply, we encourage you to join us for one of our many enrichment offerings. Please check our production page on the website for upcoming opportunities.

In 2026, we will celebrate our 35th Birthday! In the coming months, we look forward to sharing our next strategic plan and dreams with you, including more programs that will delight, educate and enlighten. Your support helps us bring this vision to life, expanding our impact and ensuring our company continues to thrive.

Thank you for being here and for being an essential part of the Antaeus community. Your presence brings our work to life.

We hope you enjoy this magical evening in Illyria.

Warm regards,

Nike Doukas
Artistic Director

Ana Rose O'Halloran
Producing Executive Director

Antaeus Theatre Company Presents

Twelfth Night

By William Shakespeare

Directed by Armin Shimerman

Scenic Designer

Christopher Scott Murillo**

Lighting Designer

Vickie J. Scott**

Properties Designer

John McElveney

Intimacy Director

Jen Albert

Production Stage Manager

Jessaica Shields

Costume Designer

Kate Bergh**

Sound Designer

Carter Dean

Composer/Music Director

John Allee

Scenic Assistant

Carter Vickers

Production Dramaturg/
Assistant Director

Kaite Brandt

Assistant Stage Manager

Jessica Osorio

PRODUCTION GENEROUSLY SPONSORED IN PART BY

Al Latham & Elaine Kramer

Michael Morrell

Ensemble

John Allee*, David DeSantos*, Alberto Isaac*,
Veralyn Jones*, Luis Kelly-Duarte, Rob Nagle*, Liza Seneca*,
Joel Swetow*, Kitty Swink*, Isaac Ybarra



**Member, Actors' Equity Association,
the union of professional Actors and
Stage Managers in the United States.*

*This production is presented under
the auspices of the Actors' Equity Los
Angeles Membership Company Rule.*



The Designers at this Theatre **
are Represented by
United Scenic Artists Local USA 829
of the International Alliance of Theatrical Stage Employees

The video and/or audio recording of this performance by any means whatsoever is strictly prohibited.

Director's Note

The great American scholar Harold Bloom said “*Twelfth Night* is surely the greatest of all Shakespeare’s pure comedies.” It has delighted audiences for centuries, including me who was inspired to write three novels about it. Unlike the histories or the tragedies, our comedy has no meaningful action, perhaps because every character looks inwardly and behaves foolishly. Their fantastical behaviors are certainly comical, but the violence of madmen is always threatening to show itself. Indeed all the characters should be locked up like Malvolio for their irrational feelings and “uncivil” actions. Ironically, only Feste, the Fool, seems sane. Even the title, to all appearances alluding to the Feast of the Epiphany, doesn’t take place in either Christmas or Winter. If I had to guess, I’d say with the dreariness of mourning in Olivia’s house melting into the merriment and incomprehensibility of unrequited Love, the season is Spring.

In this production, I purposefully cast the roles older than they are normally played because I firmly believe there’s a glorious melancholy to older people facing their last chance at finding Love. When Olivia tells Viola that “she cannot love” Orsino, I suspect she says this not only because she has no interest in the Count, but because she has grown set in her ways running her own household and priorities. But when a younger man captures her heart with ‘sweettalk,’ we can’t blame her for indulging in fantasy, longing, infatuation, and deceit, this despite the fact that her maturity knows better. “Even so quickly may one catch the plague?” and “Fate show thy force, ourselves we do not owe,” where “owe” means “own.” And what a mirror image is Viola’s Love for Orsino that is kept under wraps until the very end of the play. Indeed, with the various couples pairing up, Shakespeare gives us various categories of coupling: the homosexual one Antonio has for Sebastian, the bisexual one of Orsino for Caesario, the neglected one of Maria for Toby, and the comical bromance of Andrew for Toby. Only Feste and Fabian are not encumbered. But that may be because of class. They are of the lower classes and many of the *Dramatis Personae* are upper class. And the play roundly chastises Malvolio for inappropriately dreaming of moving up (way up!) in social standing.

But enough. I must take off my scholar’s mortarboard and put on my director’s beret. Welcome to Antaeus’s *Twelfth Night*!

Armin Shimerman, Director *Twelfth Night*

Twelfth Night

Cast of Characters

FESTE	John Allee
ORSINO/POLICE OFFICER	David DeSantos
ANDREW AGUECHEEK/CURIO	Alberto Isaac
OLIVIA	Veralyn Jones
ANTONIO/OLIVIA'S VALET	Luis Kelly-Duarte
TOBY BELCH	Rob Nagle
VIOLA	Liza Seneca
MALVOLIO/SEA CAPTAIN/POLICE OFFICER	Joel Swetow
MARIA/FABIAN	Kitty Swink
SEBASTIAN/SAILOR	Isaac Ybarra

Special Thanks from the Director

Ada Brown Mather
Angela Manke
David Rodes
John Apicella
Lisa Coto at LA Opera
Saddleback College
Salette Corpuz
Sir John Barton
Sophie Lynd
Trustin Adams
UC Irvine
UC Riverside Department of Theatre, Film, and Digital Production

Land Acknowledgement

Antaeus Theatre Company acknowledges the Gabrielino-Tongva peoples as the traditional caretakers of the land in the Los Angeles basin where Antaeus is located. We pay our respect to the Ancestors, Elders, and Relations – past, present, and emerging.

ENSEMBLE - TWELFTH NIGHT



John Allee



David DeSantos



Alberto Isaac



Veralyn Jones



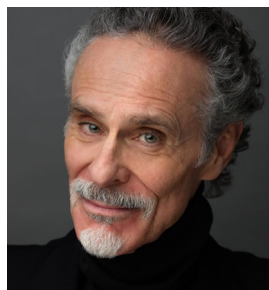
Luis Kelly-Duarte



Rob Nagle



Liza Seneca



Joel Swetow



Kitty Swink



Isaac Ybarra

CAST

JOHN ALLEE (FESTE/COMPOSER/ MUSIC DIRECTOR):

John is an ensemble member of ANTAEUS, where he has appeared in *The Tempest*, *The Cripple of Inishmaan*, *Cloud 9*, *Uncle Vanya*, *The Crucible*, *Peace in Our Time*, *The Malcontent*, and more, and has directed several readings. Other stage highlights: *The Mystery of Irma Vep*, *A Man for All Seasons*, *The Man Who Came to Dinner*, *33 Variations* (Actors Co-op); *Much Ado About Nothing* (Kingsmen Shakespeare Co); *Little Shop of Horrors* (Arizona Theatre Company); *Assassins* (Los Angeles Theatre Center); *Alone Together* (Pasadena Playhouse); *A Midsummer Night's Dream* (LA Opera, San Francisco Opera, Houston Grand Opera); *One Thousand Cranes* (Mark Taper Forum); and *Chaplin* (Pre-Broadway). On TV, he played the piano-playing Pasha in the Starz series *Flesh and Bone*. Podcast audiences can hear him on *Two Dead Girls in Jubeliene*. John is also an author and composer of musical plays, a songwriter, and a recording artist, and is a recipient of the ASCAP/Sammy Cahn Award for excellence in lyric writing. His music has been featured Off-Broadway, in regional theatre, and on TV. His recordings include *Bardfly*, an album of jazz interpretations of songs from the plays of Shakespeare.

DAVID DESANTOS (ORSINO/POLICE OFFICER):

At ANTAEUS: *Cloud 9*, *The Abuelas*. Other Theaters: Oregon Shakespeare Festival, Theatricum Botanicum, LATC, A Noise Within, South Coast Rep, Kansas City Rep, Arena Stage, Berkeley Rep, Denver Center, Theatreworks,

Hudson MainStage. TV: Recurring roles on *SWAT*, *Roswell: New Mexico*, *NCIS: LA*, *The Rookie*, *Animal Kingdom* and others. Master Acting Teacher at The BGB Studio.

ALBERTO ISAAC (ANDREW AGUECHEEK/CURIO):

At ANTAEUS: *Everybody*, *Three Days in the Country*, *As You Like It*. Other Theaters: *Equus*, *Three Sisters*, *Pacific Overtures*, *Accomplice*, *Mother Tongue* (East West Players); *Three*, *Bloodletting*, *Dogeaters*, *Southernmost* (Playwrights' Arena); *Last of the Suns* (Berkeley Rep); *Fishhead Soup* (ACT, Seattle); *Blood Wedding* (Odyssey); *Made in Bangkok* (Mark Taper Forum); *Dogeaters* (La Jolla Playhouse); *The Wash* (Studio Theater, D.C.); *The Importance of Being Earnest* (A Noise Within); *Romeo and Juliet* (Lodestone Ensemble); *The White Death* (Cast Theatre). TV: Recurring Roles in *The Cleaning Lady*, *Crazy Ex-Girlfriend*, *Family Law*, guest star in *Law and Order SVU*, *Assassination of Gianni Versace*, *Get Shorty*, *West Wing*, *All Rise*, *The Defenders*, *Coach*, *Good Luck Charlie*, *Melrose Place*. Film: *Shotgun Wedding*, *Beyond the Next Mountain*, *Kentucky Fried Movie*.

VERALYN JONES (OLIVIA):

At ANTAEUS: *Hamlet*, *Wedding Band*, *You Can't Take it With You*. Other Theater: *King Hedley II*, *Seven Guitars*, *Gem of the Ocean*, *Argonautika*, *Mad Woman of Chailot* (A Noise Within) where she is a Resident Artist; *A Raisin in the Sun*, *A Christmas Carol*, *My Wandering Boy*, *Ben & the Magic Paintbrush* (South Coast Rep); *Immediate Family* (Mark Taper Forum); *A Selfish Sacrifice* (Denver Center); *A Perfect Wedding*

(Kirk Douglas Theatre); *The Old Settler* (International City Theatre); *The Father* (La Scala Theater, Stockholm, Sweden); *Three Sisters After Chekhov* (Lower Depth Theatre); *The Merchant of Venice*, *The Winter's Tale*, *Twelfth Night*, *A Midsummer Night's Dream*, *Richard the III* (Los Angeles Women's Shakespeare Company); *Othello* (Boston Court Theatre). Some TV: Recurring: *The Lady in the Lake*, *The Girls on the Bus*, *The Equalizer*, and *City of Angels*, *S.W.A.T.*, *The Unit*, *Southland*, *Brooklyn South*, *Treat Matrix*. She was recently honored with a Certificate of Recognition for her outstanding work in the LA Theater Community from the Los Angeles City Mayor, Karen Bass, and the Integrity Award from The Los Angeles Women's Theatre Festival. She is the Co-Founder/ Associate Producer at Lower Depth Theatre and is a longtime member of the Actors Studio. Love always to G & K!!!

LUIS KELLY-DUARTE (ANTONIO/ OLIVIA'S VALET): At ANTAEUS:

As You Like It, *The Tempest* (Classic Sundays), *Tea Party* (Lab Results), *Along the River*, *Almost Winter* (Lab Results), 90012: *DTLA* (The Zip Code Plays). Other Theater credits: *A Streetcar Named Desire* (Boston Court Pasadena); *Handball* (Urban Theatre Movement & NYC Summer Stage), *Romeo and Juliet* (African American Shakespeare Company). Recent TV/Film: *Archenemy*, *Shameless*, *Animal Kingdom*. Luis is also an Ensemble Studio Theatre company member. Follow @authenticLKD

ROB NAGLE (TOBY BELCH): At

ANTAEUS: *The Little Foxes*, *The Hothouse*, *The Liar*, *Macbeth*, *Peace in Our Time*. Other Theaters: Boston

Court Pasadena, Denver Center for the Performing Arts, Fountain Theatre, Moving Arts, New World Stages, The Old Globe, Pasadena Playhouse, Portland Center Stage, Road Theatre Company, Rogue Machine Theatre, Shakespeare Theatre Company, Skylight Theatre Company, South Coast Repertory, Mark Taper Forum, Troubadour Theater Company. Film includes: *Missing Rhythms*, *Sisters*, *Paper Marriage*, *Alien Vacation*, *Last Weekend*, *Blonde*, *The 11th Green*, *First Love*, *To Hell and Gone*, *Safety*, *Bad Samaritan*, *Fishing Naked*, *New Year's Eve*, *The Soloist*, *American Wedding*. TV includes: *Good Trouble*, *NCIS: Los Angeles*, *Batwoman*, *Mom*, *Dynasty*, *NCIS: New Orleans*, *Little Fires Everywhere*, *Modern Family*, *The Librarians*, *Grey's Anatomy*, *CSI: Crime Scene Investigation*, *Criminal Minds*, *NCIS*, *Mad Men*, *Eli Stone*, *Everwood*, *The Guardian*, *Buffy the Vampire Slayer*, *Dawson's Creek*. Education: Northwestern University. Spouse: Heather Allyn. Pug: Houston. @nagdoggie robnagle.com

LIZA SENECA (VIOLA): At ANTAEUS:

The Caucasian Chalk Circle (LADCC Nominee, Lead Performance), *Les Liaisons Dangereuses*, *Cloud 9* (LADCC Award, Ensemble). Liza is the Co-Founder/Co-Artistic Director of The 6th Act where she has performed in the World Premieres of *Sukkot* and *The \$5 Shakespeare Company* as well as *An Evening of Betrayal*. Other notable stage work includes *Amyrka* at the Kirk Douglas Theatre, *Macbeth* at Colorado Shakespeare Festival, *Much Ado About Nothing* at Kentucky Shakespeare Festival, *Romeo and Juliet* at Kingsmen

Shakespeare Festival, and the LA and NYC premieres of *Pulp Shakespeare*. Her TV credits include a recurring role on *The Following*, among others. She is a prolific voice actor and can be heard in countless episodes of TV, Films, Video Games, and Audio Books. Some favorite voice credits include *Ted Lasso*, *Star Trek: Strange New Worlds*, *Ready Player One*, and *Finding Dory*.

JOEL SWETOW (MALVOLIO/SEA CAPTAIN/POLICE OFFICER): At

ANTAEUS: *Hamlet*, *Henry IV: Part One*, many ClassicsFests, workshops and readings. Other Los Angeles Theater: Antony in *Antony and Cleopatra* (Theatricum Botanicum); *Les Blancs*, *The Suppliant Women* (Rogue Machine Theatre); *Forever House* (Skylight Theatre); Estragon in *Waiting for Godot*, Scrooge in *A Christmas Carol*, Duke Vincentio in *Measure for Measure*, Myron Berger in *Awake & Sing*, Vershinin in *The Three Sisters*, Arnolphe in *The School For Wives*, title roles in *Cymbeline*, *Tartuffe*, *Merchant of Venice*, and tons more at A Noise Within. N.Y.C. & Regional Theater: Roles include leads in *A Shayna Maidel*, *The Normal Heart*, *Talley's Folly*, and *The Sound of Teeth*. Directing: *The Cherry Orchard*, *As You Like It*, *Miss Witherspoon*, *The Learned Ladies*, among others. TV/Film: *American Horror Stories*, *Kidding*, *The Orville*, *Lucifer*, *Silicon Valley*, *Charmed*, *Alice in Wonderland*, *Lord of Illusions*, among many others. Been heard in reams of animated projects and scads of commercials. See more at imdb.com/name/nm0842498/

KITTY SWINK (MARIA/FABIAN): At

ANTAEUS: Former Artistic Director; As an actor: *Tonight at 8:30*, *Autumn*

Garden, *MacBeth*, *Picnic*, *The Curse of Oedipus*, *The Cripple of Inishmaan*, and *The Zip Code Plays*. Other Acting Credits: A Noise Within, Florida Stage, Merrimack Rep, Barter Theater, Mt. Hood Rep, Matrix Theatre, Andak Stage, Tiffany Theatre, Odyssey Theatre. On TV: Recurring *For the People*, *South of Nowhere*, *Santa Barbara*. Guest Stars: *Star Trek: Deep Space 9* and many others. Film: *Patty Hearst*, *In the Mood*, *Camera* and others. Former Vice President of the Screen Actors Guild.

ISAAC YBARRA (SEBASTIAN/SAILOR):

At ANTAEUS: *Reading of Three Sisters*. Isaac is honored to return to ANTAEUS and its incredible company of artists. This past summer, he was featured in a production of *As You Like It* with the Independent Shakespeare Company. He loves writing, drawing, crafting, building and breaking! Other Theater: *We Lovers* (Conundrum Theatre Company); *Infierno* (Zanni Theatrics); *Feliz* (The Wayward Artist); *As You Like It* (Long Beach Playhouse); *As You Like It* (Ophelia's Jump); *Twelfth Night* (Mysterium Theater). isaacybarra.com

PRODUCTION

ARMIN SHIMERMAN (DIRECTOR):

At ANTAEUS: Directing: *The Crucible*, *Measure for Measure*; Acting: *Tonight at 8:30*, *The Seagull*, *Macbeth*, and *Three Days in the Country*. On Broadway: *The Threepenny Opera*, *St. Joan*, *Broadway*, and *I Remember Mama*. American Regional Theaters: The Old Globe, Tyrone Guthrie Theatre, Stratford Shakespeare Festival, NY Shakespeare Festival, Utah Shakespeare Festival, and many others. Los Angeles Regional Theater: Mark Taper (*Richard II*), A Noise Within (*The Madwoman of Chaillot*), Theatricum Botanicum (*As You Like It* and *Hamlet*) and the Geffen Playhouse (*Discord* and *Hughie*). He was an adjunct professor at the USC School of Theatre. Over 200 projects as a prolific TV, Film, and Interactive Game performer. In addition, he is the author of the political romance *Illyria*, a trilogy of books where the characters of *Twelfth Night* interact with Elizabethan historical characters, including Will Shakespeare. But, of course, the jewel of his accomplishments is that he is married to Kitty Swink.

WILLIAM SHAKESPEARE

(PLAYWRIGHT): William Shakespeare was an English playwright, poet, and actor, widely regarded as one of the greatest writers in the English language. Born in Stratford-upon-Avon in 1564, he became a central figure of the Elizabethan era. Shakespeare's works, including *Romeo and Juliet*, *Hamlet*, and *Macbeth*, showcase his mastery of language, character, and universal themes. Renowned for both his tragedies and comedies, he penned such beloved plays as *Twelfth Night* and *A Midsummer*

Night's Dream, blending wit, romance, and poignant insight. His 154 sonnets and narrative poems further reveal his poetic brilliance. Despite living over four centuries ago, Shakespeare's exploration of human emotion and social complexity remains profoundly relevant, making his legacy unparalleled in the world of theater and literature.

NIKE DOUKAS (ARTISTIC DIRECTOR):

At ANTAEUS: Directing: *The Tempest*, *The Hothouse*; Acting: *The Zip Code Plays*, *Three Days in the Country*, *Hedda Gabler*, *Cousin Bette*, *Tonight at 8:30*, *The Liar*, *Patience*, *The Wood Demon*. Other Directing credits: Ensemble Theatre Company, A Noise Within, The Jewel Theatre, North Coast Repertory, Playwright's Arena, PICT (Pittsburgh). Other Acting credits: South Coast Repertory, Pasadena Playhouse, The Ensemble Theatre Company, PICT, Kinetic Theatre Company, ACT (Seattle), Shakespeare Festival LA, The Old Globe, The Mark Taper Forum, Shakespeare Santa Cruz, Berkeley Repertory Theatre, The American Conservatory Theatre. TV: Recurring roles on the new *Frasier* and *Desperate Housewives*, and guest stars on *NCIS* and many others. M.F.A., The American Conservatory Theatre.

ANA ROSE O'HALLORAN (PRODUCING EXECUTIVE

DIRECTOR): Ana Rose joined ANTAEUS in 2015 and has produced over 25 productions during her tenure. Previously, she has served as the Senior Director at The Pablove Foundation, and in various roles in the development department at Center Theatre Group. She received her M.F.A. in Theatre Management from

California State University, Long Beach, and a B.F.A. in Theatre Management and a B.F.A. in Performance from Ohio University.

CHRISTOPHER SCOTT MURILLO (SCENIC DESIGNER): Christopher is a scenic designer, artist, and educator based in Los Angeles. He is thrilled to be collaborating with ANTAEUS for the first time. Recently, his stage designs have been seen at IAMA Theatre Company, Chance Theater, Latino Theatre Company, Playwrights' Arena, and East West Players. As a production designer for TV, his work can be seen on Paramount+ on *Halo the Series: Declassified* and *The Ready Room* with Wil Wheaton. He is a 2016 recipient of the Princess Grace Foundation Theater Fellowship. Currently, he is on faculty at UC RIVERSIDE in the Department of Theatre, Film and Digital Production.

KATE BERGH (COSTUME DESIGNER): Kate designs costumes for many venues. Starting her career in the Chicago theater scene, she moved to Los Angeles and was introduced to a new world of designing costumes for Film, Commercials, celebrity photo shoots and outdoor advertising and animation. And then came back to her first loves – Theater, Opera and Dance. She designed *A Little Night Music* (LADCC Award), *Ragtime* (Ovation Nomination) *Casa Valentina* (LADCC Award, Ovation Nomination), *It's a Wonderful Life*, *Miracle on 34th Street*, *Art*, *Sleepless in Seattle*, *Amahl* and *The Night Visitors* for the Pasadena Playhouse. Other Theaters include: Geffen Playhouse, Walnut Street Theater in Philadelphia, Laguna Playhouse, Ensemble Theater in Santa

Barbara, The Industry, Edinburgh Fringe Festival, Rogue Machine, Boston Court Pasadena and The Australian Theatre Company.

VICKIE J. SCOTT (LIGHTING DESIGNER): Vickie has created lighting and scenic designs for dance and theater productions throughout the U.S. and abroad. Her recent work includes scenery and lighting designs for *LAUGHABLE* in Edinburgh, Scotland; *The Death of Kings* at the Verona Shakespeare Festival in Verona, Italy; *The Shot* in Los Angeles and New York City; and *Bulletproof Unicorn* in New York City. Lighting Designs include: *Is Edward Snowden Single?* in New York City and Los Angeles; *The Second Death of a Mad Wife* and *Sealed Orders* for Ophelia's Jump Productions; *The Winter's Tale* and *The Tempest* at ANTAEUS; *A Great Wilderness* and *Little Theatre* at Rogue Machine; and numerous Dance tours both nationally and internationally. Vickie is a Studio Professor in Design at UC Santa Barbara.

CARTER DEAN (SOUND DESIGNER): Carter is thrilled to collaborate with so many wonderful artists in his first production with ANTAEUS. LA Theater: *Pipeline*, *Keely and Du* with HCLab; *Dutchman* with Leo Rising Theatre; *We Are Proud to Present...* with Third Culture Theatre; *Cymbeline*, *Julius Caesar*, *Troilus and Cressida*, *Much Ado About Nothing*, *Indecent*, *Peter and the Starcatcher*, *The Last Days of Judas Iscariot*, and many more with Art of Acting Studio. New York Theater: *Fool for Love*, *Really, Really*, *Bye Bye Birdie*. Film: Re-Recording Mixer on *Chekhov's Gun*, *Pakistaniamerican*, and

Pencona. A Louisiana native and graduate of the LSU School of Theatre, he studied acting at the Stella Adler Studio in NYC. Thanks to my wonderful, supportive wife, Julia - you make me feel loved every day.

JOHN MCELVENY (PROPERTIES

DESIGNER): John was an Equity Stage Manager and Lighting Designer for many years before joining ABC Television as a Unit/Production Manager. While there he worked many sit-coms, specials and awards shows. He has served as Production Manager for The Emmys and was Senior Production Manager for many Academy Awards presentations. He and the group called MacAndME designed properties for over 50 productions at the Colony Theatre in Burbank and other venues in the Los Angeles area. At the Falcon/Garry Marshall Theatre he has designed over 14 productions, plus several at the Sierra Madre Playhouse, and Main Street Theatre Co. in Rancho Cucamonga. Other Theaters include: A Noise Within in Pasadena, 14 productions at The Ensemble Theatre Company in Santa Barbara, and most recently at ANTAEUS for *The Importance of Being Earnest*. He is past President of the Pasadena Playhouse Alumni and Associates.

JOHN ALLEE (COMPOSER/MUSIC DIRECTOR): See Cast Bio.

CARTER VICKERS (SCENIC

ASSISTANT): Carter is super excited to be working on *Twelfth Night* at Antaeus! This is Carter's first production at Antaeus, and he is thrilled to be working with such an incredible team. Carter is primarily a scenic & production designer, having recently graduated

from Loyola Marymount University. He is currently designing *Puffs* at Loyola Marymount University. Many thanks to Christopher Scott Murillo and the rest of the wonderful production team! @cartervickers.design

JESSAICA SHIELDS (PRODUCTION STAGE MANAGER): At ANTAEUS:

On Call PSM/ASM: *The Importance of Being Earnest, Nora*; PSM: *The Zip Code Plays, The Cripple of Inishmaan*; Patron Experience Associate since 2020. At East West Players: Front of House Associate: *Pacific Overtures, Unbroken Blossoms, Spring Awakening*. At Art of Acting Studio: Resident Stage Manager 2017-2022. At Fountain Theatre: PSM: *Runaway Home*. B.A. in Dance & Theatre, Texas Woman's University.

KAITE BRANDT (ASSISTANT DIRECTOR/PRODUCTION

DRAMATURG): At ANTAEUS: *The Winter's Tale, The Tempest, Love and Information, Everybody, Hamlet, and Measure for Measure*. Other Theater: *King Lear* (Radically Miscast Shakespeare - The Porters of Hellsgate); *Julius Caesar, The Women of Shakespeare* (Warriors for Peace); *Much Ado About Nothing, A Midsummer Night's Dream, Love's Labour's Lost* (Sierra Madre Shakespeare Festival); *Love's Labour's Lost* (Chase What Flies); *Much Ado About Nothing* (The Unlikely Shakespeare Company). Video Games: *The Big Con, Fossil Echo, Almightree: The Last Giver*. When not directing, Kaite works as a dramaturg, teacher, and text coach.

JESSICA OSORIO (ASSISTANT STAGE MANAGER): At ANTAEUS: *As You Like It*, *Les Liaisons Dangereuses*, *The Hothouse*, *Native Son*, *Three Days in The Country*, *The Cripple of Inishmaan*, *The Little Foxes*, *Diana of Dobson's*, *The Caucasian Chalk Circle*, *Hamlet*, *Everybody*, *Love & Information*, *SHE*. Other Credits: *If All The Sky Were Paper* (Kirk Douglas Theatre) *The First Deep Breath* (Geffen Playhouse) *AVA* (Geffen Playhouse) *Reefer Madness* (Whitley Theater) Training: AMDA LA - B.F.A. Cheers to everyone involved with bringing this play to life. Enjoy the magic!



Peter James Smith, Jocelyn Towne, and Brian Tichnell in *Nora* (2024), Photo by Jenny Graham

Support Antaeus Today!

As a nonprofit, we rely on the generosity of supporters for most of our income. Every production on our stage, every student we serve in our arts education programs, and every job we create is thanks to this community.

With your support we are able to:

- Produce Award-Winning Productions
- Create Paying Jobs for Artists
- Offer Arts Education Programs
- Provide Accessible Tickets to the Local Community

Ways to support Antaeus:

- **Sustaining Support** - Set up a monthly gift. If every member of the Antaeus community gave \$10 monthly, our costs would be covered.
- **Stock** - Remember you can donate appreciated stock and save taxes on the capital gain.*
- **Donor Advised Fund** - Check the cutoff date for making grants from your DAF.
- **Employer Matching Gift** - Double your impact! Ask your employer about making a matching gift.
- **IRA** - Already taking your Required Minimum Distribution (RMD)? You can direct those payments to a charity and skip paying taxes.*
- **Bequest** - Invest in the future of Antaeus, plan a legacy gift today.

**We suggest you consult with your financial or tax advisor.*

Join our community as a donor today. To give, stop by the box office, visit antaeus.org, call us at 818.506.5436, or mail your gift to Antaeus Theatre Company, 110 East Broadway, Glendale, CA 91205.

For questions, contact Senior Associate, Sophie Bell Meincke, at sophie@antaeus.org or 818.506.5436.



Cherish Monique Duke in *Everybody* (2022); Photo By Jenny Graham

Your love of Antaeus helps us thrive. We can't wait to share more unforgettable moments with you in the seasons ahead!

**Stay Tuned for our 2025/26 Season
Announcement Coming Soon.**

Thank You to our Extended Family
of Loyal Supporters

CORPORATE SPONSORSHIP

Join other business leaders by supporting Antaeus Theatre Company's award-winning programming through sponsorship and matching gift programs.

Corporate Sponsors

Comcast NBC Universal

The Kroger Co. Foundation

Netflix

Pasadena International Film Festival

Paul Hastings LLP

So Smitten Events

The Walt Disney Company Foundation

Warner Brothers

*Based on donations made between 12/12/23-12/11/24
+ Indicates monthly sustaining donor*

PRODUCER'S CIRCLE

The Producer's Circle ensures we are never limited in our artistic pursuits on our stage. This group believes in sustained excellence and allows Antaeus to produce plays no matter the cast size or production needs.

\$50,000+

Kiki Ramos Gindler & David Gindler
The David Lee Foundation
Perenchio Foundation

In Honor of Channing Chase with support from Daniel Saxon

\$25,000+

The Ahmanson Foundation
The Michael J. Connell Foundation
Rosemary A. Hernandez
Los Angeles County Department of Arts and Culture
The Ralph M. Parsons Foundation
The Shubert Foundation
Mary Jo & David Volk

\$15,000+

Sonja Berggren & Patrick Seaver
Los Angeles County Department of Arts and Culture
Suzy Moser
Molly Munger & Steve English
The Peterson Project - Honoring the Legacy of Melinda Peterson
Reba Waters Thomas+
Jocelyn Towne & Simon Helberg
Jack & Belinda Walker

*Based on donations made between 12/12/23-12/11/24
+ Indicates monthly sustaining donor*

DIRECTOR'S CIRCLE

The Director's Circle is a distinguished group of theater lovers who provide general operating support to Antaeus. In recognition of this support, they receive invitations to special events with Antaeus' artists.

\$10,000+

Robert W Goldsby
The Green Foundation
Scott Fraser & Cathy Jurca
Remembering Melinda Peterson - Charles Moed
The Proctor/Peterson Trust+
Debra Thompson & Lawrence Riff
Daniel Blinkoff & Tamlyn Tomita
April Webster

\$5,000+

Adele L. Abrams, Esq.
Bill Brochtrup
Evie & John DiCiaccio
Dawn Didawick & Harry Groener+
Ruth Eliel & Bill Cooney
Glendale Educational Foundation
Matthew Goldsby
J Robin Groves+
Al Latham & Elaine Kramer
Mary Lambert
Michael Morrell
Anthony J. Oncidi
Gregg & Debbie Oppenheimer
Amy Proctor & Lloyd Roberson II+
Dan Putman
Jennifer & Matthew Rowland
Jaye Scholl & Charlie Bohlen+
Laura A. Seigle
Joan Pirkle Smith & Kurtwood Smith
Arlene Vidor

*Based on donations made between 12/12/23-12/11/24
+ Indicates monthly sustaining donor*

DIRECTOR'S CIRCLE

The Director's Circle is a distinguished group of theater lovers who provide general operating support to Antaeus. In recognition of this support, they receive invitations to special events with Antaeus' artists.

\$2,500+

Gigi Bermingham
Emily Chase & David Decker+
Sunita Deshmukh
Jay Lee
Bruce & Valerie Merritt
Richard Nathan+
Cara Robertson
R. Scott & Miriam Thompson
Wendy & Peter Van Norden
Steven Warheit & Jean Christensen
Karen Malina White

\$1,500+

Amy Aquino & Drew McCoy	Ana Rose & Grant O'Halloran+
Kathy Baker & Steve Robman	Michael R. Oppenheim
Anne Gee Byrd	Gwynne & Robert Pine+
JD Cullum	Deborah E. Reed
Lorraine Despres & Carleton Eastlake	John S. Schwartz
Jeanie Fiskin	Larry Title & Ellen Shavelson
Nancy Hancock Griffith	Drs. Ligia & William Toutant
Allen R. Grogan	Amelia White & Geoffrey Wade
Anonymous	Willow Cabin Productions
Susan & Bob Long	Patty Woo & Steve Poretzky
Kwana & Dan Martinez Hamlin+	

*Based on donations made between 12/12/23-12/11/24
+ Indicates monthly sustaining donor*

STAGE CREW

The Stage Crew community of donors support the production of great plays,
innovative arts education outreach, and the training of the next generation of actors.

\$1,000+

Robert Leventer & Jenna Blaustein
Deborah & Andrew Bogen
Caplin Foundation
Debra Danner
Nike Doukas & Leo Marks
Barbara Durham+
Paul Eiding+
Sharon & Rick Ellingsen
Greg Grammer & Simon Wright
Lillian Groag
Melanie L Hayes
Paul M Holmes

Kahn Education Foundation
Dakin Matthews & Anne McNaughton
Dan Oliverio+
In Honor of Dakin Matthews
Deborah E. Reed
Ronus Foundation
John Alee & Kathleen Ross-Allee
G Scott Halloran & Peter J. Rusch
The Sheri and Les Biller Family Foundation
In Honor of Dakin Matthews
Patricia & Lawrence Sparks

\$500+

Robert C. Anderson
Mary & Perry Bankston
Miles Benickes
Eileen Boyd
Anonymous
Daniel Castellaneta & Deborah Lacusta
Stephanie & Dennis Cohen
Andrew R. DeMar Family Foundation
Paula Devine
Kathleen & James Drummy
Drs. Marjorie Marks Fond & Richard Z. Fond
Dr. Jerome Hunt & Alvin Ford Jr.
Leslie & Robert Gordon+
Eve Gordon & Todd Waring+
Anonymous
Anthony & Alizon Harris
Bill & Priscilla Kennedy
Melinda & Robert LeMoine

Elaine Lockhart-Mummery
Gail & Tony McBride
Myron Meisel
Elyse Mirto+
From the Family of Melinda Peterson
Ellen Rentz
Susan Schwarz
George & Carolyn Seitz
Liza Seneca+
James Sutorius
Elizabeth Swain
Kitty Swink & Armin Shimerman
Marcelo & Lori Tubert
Dale E. Turner
Juliet Landau & Deverill Weekes
Andy & Hannah Wolk
Richard Yaffe

\$100+

John Achorn
Rhonda Aldrich &
Stephen Halbert+
Heather Allyn & Rob Nagle+
Annet Arakelian
Queen Charlotte's Villeins
for Dakin Matthews

Anonymous
Max Benavidez
Joan Borgman &
John Apicella+
Amy Borgman &
Michael Fiorillo
Christine Avila & Mark Bramhall

Bruce & Susan Brower
Edgar Bullington
Elisa & Eric Callow
Christopher Capiello
Chancy Memorial Foundation
Karen Chiella+
Karen Constine

*Based on donations made between 12/12/23-12/11/24
+ Indicates monthly sustaining donor*

Sondra Currie & Alan J. Levi	Victor & Anna Luke	Elizabeth & Steven Swink
Anonymous	Joseph MacDonald	Eileen T'Kaye & David Bischoff
Diana Daves & John	Robert Machray	Jill Maglione
McLaughlin	Fred Manaster	E. J. von Schoff
Martha Demson	Abigail Marks+	Patrick Wenk-Wolff
Bronwen Denton-Davis	Dr. Jeffrey Gale & Ms. Julane	Anonymous
Emily Deschanel	Marx	Stanley & Laurie Whitcomb
Charles Dillingham	Judith Marx & Tony Amendola	Paul Willson
Sheldon Epps	Anna Mathias	Alicia Wollerton+
Nicole Erb+	Patricia Mayer	
Anonymous	John McCabe	
Arnold Siegel & Susan	Douglas McCarthy	
Futterman	Philip McKinley	
Barbara & Frederick Gable	Mike McShane+	
Olga Garay-English+	David Barkowitz	
Amanda Stork	Marlene Mills	
Traute Gleeson	Kerry Mohnike	
Susan Gosden	Mickey & Mike Murphy	
Gretchen & Richard Grant	Arianne Neumark	
Marilyn Groves	Devon O'Brien	
Michael Barker & Heidi	Garrett M. Brown & Marie	
Hanson+	Pal-Brown	
William & Bernhild Heckmann	Christina Pickles	
Beverly Higginson	Deb Podus	
Katie Hotchkiss+	Anonymous	
Marty & Merrilee Howard	Richard Reinhart	
Carol Howell	Stephen & Melanie Rockwell	
Rosemary Huang+	Christine Sanders	
Kevin Hudnell	John Schuning & Gregory	
Sheila & Milton Hyman	Ross+	
Foundation	Ruth Seid	
Joshua Ireland	Ruth & David Seigle	
Freya & Mark Ivener	Steven Seliger	
Tom Jacobson & Ramone	Nayan Shah and Ken Foster	
Munoz	Cordelia Sherland	
Andrew F. Johnson	Stephanie Shroyer	
Alice & Sam Johnston+	John & Juliana Sloan+	
Veralyn Jones	Margaret & David Sloan	
Denise & David Kautter	Adam J. Smith	
Kamran Izadpanah	Peter James Smith	
Kathy Kraas & Leon Shapiro	Christopher John Smith	
Marshall F. Kramer	Steven & Devon Brand	
Emily Kuroda & Alberto Isaac	Zane Stanley	
Bonnie & Jim Lambert	Nadya Starr	
Lanzafame Family Trust+	Janellen Steinger+	

*Based on donations made between 12/12/23-12/11/24
+ Indicates monthly sustaining donor*

STAFF

PRODUCING EXECUTIVE DIRECTOR

Ana Rose O'Halloran

ARTISTIC DIRECTOR

Nike Doukas

EXECUTIVE ASSISTANT

Courtney Agustin

TECHNICAL DIRECTOR

Adam Meyer

SENIOR ASSOCIATE,
PHILANTHROPY & COMMUNICATIONS

Sophie Bell Meincke

BOOKKEEPER

Amy Michner

OPERATIONS MANAGER

Kristin Weber

BOARD OF DIRECTORS

Kiki Ramos Gindler, Chair
Laura Seigle, Treasurer
Debra Thompson, Secretary

Sunita Deshmukh

Evie DiCiaccio

Dawn Didawick

Nike Doukas

Ana Rose O'Halloran

Judy Louise Johnson

Jay Lee

Clarissa Park

Jennifer Rowland

Reba Thomas

Arlene Vidor

David Volk

Jack Walker

April Webster

BOARD EMERITUS

Bob Craft

David Gindler

Mary Lambert

PRODUCTION & FRONT OF HOUSE

MASTER ELECTRICIAN

Ryan Dempsey

ELECTRICIANS

Sam Campbell, Iliana Cusack-Mercedez,
Jennifer Gonzalez, Kevin Orellana,
Elijah Reyes, Stephanie Sandler

CARPENTERS

Aaron Lyons, Adam Meyer,
Audrey Szot, Carter Vickers

LEAD SCENIC PAINTER

Orlando de la Paz

SCENIC PAINTERS

Marygold Martinez, Audrey Szot,
Carter Vickers

SCENIC ASSISTANT

Carter Vickers

COSTUME ASSISTANTS

Casey Collaso, Jessica Osorio

ARTWORK

Frank Ishman

PATRON EXPERIENCE ASSOCIATES

Kaite Brandt, Casey Collaso,
Jude George, Farrah Gharibian,
Emily Kellis, Spencer Marchewka,
Max Tel, Niek Versteeg

COMPANY MEMBERS

John Achorn, Bernard K. Addison, Rhonda Aldrich, John Allee, Heather Allyn, Tony Amendola, John Apicella, Ben Atkinson, Tessa Auberjonois, Paul Baird, Gigi Birmingham, Daniel Bess, Daniel Blinkoff, John Bobek, Andrew Borba, Chad Borden, Christopher Breyer, Bill Brochtrup, Anne Gee Byrd, Nick Cagle, Jane Carr, Jon Chaffin, Emily Chase, Kendra Chell, Shannon Lee Clair, Josh Clark, Avery Clyde, Barry Creyton, JD Cullum, Paul Culos, Nicholas D'Agosto, Gregg T. Daniel, Julia Davis, Ramon De Ocampo, Jason Delane Lee, John DeMita, David DeSantos, Seamus Dever, Etta Devine, Gabriel Diani, Dawn Didawick, Francia DiMase, Mark Doerr, Daniel Dorr, Nike Doukas, Sarah Drew, Cherish Monique Duke, Paul Eiding, Nicole Erb, Terry Evans, Scott Ferrara, Martin Ferrero, James Ferrero, Karianne Flaathen, Julia Fletcher, Bo Foxworth, Jeff Thomas Gardner, Matthew Goldsby, Alexandra Goodman, Eve Gordon, Emily Goss, Belen Greene, Ellis Greer, Harry Groener, Matthew Grondin, Arye Gross, Tim Halligan, Simon Helberg, Alexandra Hellquist, Steve Hofvendahl, Shannon Holt, Sally Hughes, Karen Huie, Alberto Isaac, Antonio Jaramillo, Judy Louise Johnson, Dylan Jones, Verilyn Jones, Gerard Joseph, Luis Kelly-Duarte, Connor Kelly-Eiding, Michael Kirby, Lily Knight, Tamara Krinsky, Chelsea Kurtz, Mildred Marie Langford, Adrian LaTourelle, Paul Lazarus, Jay Lee, Emily Lenkeit, Ian Littleworth, Melanie Lora, Henri Lubatti, Jazzlyn K. Luckett, Aaron Lyons, Jill Maglione, Abigail Marks, Leo Marks, Kwana Martinez, Anna Mathias, Kellie Matteson, Dakin Matthews, Sandra McClain, Don McManus, Anne McNaughton, Mike McShane, Desiree Mee Jung, Bill Mendieta, Peter Mendoza, Adam Meyer, Lynn Milgrim, Richard Miro, Elyse Mirto, Rosalyn Mitchell, Ned Mochel, Rebecca Mozo, Rob Nagle, Ann Noble, Jeffrey Nordling, Catia Ojeda, Linda Park, Robert Pine, Erin Pineda, Lawrence Pressman, Philip Proctor, John Prosky, Deborah Puette, Anna Quirino-Miranda, Carolyn Ratteray, Lloyd Roberson II, Spencer Rowe, Jeanne Sakata, Liza Seneca, Armin Shimerman, Stephanie Shroyer, John Sloan, Adam J. Smith, Kurtwood Smith, Peter James Smith, Devon Sorvari, Paul Stanko, Janellen Steinger, Joanna Strapp, Susan Sullivan, James Sutorius, Elizabeth Swain, Joel Swetow, Kitty Swink, Jeanne Syquia, Brian Tichnell, Reba Thomas, R. Scott Thompson, Danielle Thorpe, Jeff Torres, Jocelyn Towne, Rebekah Tripp, Marcelo Tubert, Peter Van Norden, Tim Venable, Geoffrey Wade, Todd Waring, Patrick Wenk-Wolff, Laura Wernette, Amelia White, Karen Malina White, Abby Wilde, Jules Willcox, Paul Willson, Alicia Wollerton, Zoe Yale, Kelvin Yu, Buck Zachary, Lizzie Zerebko, Josh Zuckerman

TITANS

Specially designated company members who have contributed above and beyond!

John Achorn, John Apicella, Fran Bennett, Bill Brochtrup, Ralph Drischell, Robert Goldsby, Gregory Itzin, Dakin Matthews, Anne McNaughton, Rob Nagle, Angela Paton, Melinda Peterson, Philip Proctor, John Sloan, Kitty Swink

2024/25 SEASON

THE IMPORTANCE OF BEING EARNEST

WRITTEN BY

OSCAR WILDE

DIRECTED BY

GIGI BERMINGHAM

OCT 13 - NOV 18, 2024

TWELFTH NIGHT

WRITTEN BY

WILLIAM SHAKESPEARE

DIRECTED BY

ARMIN SHIMERMAN

FEB 9 - MAR 17, 2025

THE GLASS MENAGERIE

WRITTEN BY

TENNESSEE WILLIAMS

DIRECTED BY

CAROLYN RATTERAY

APR 27 - JUNE 2, 2025

